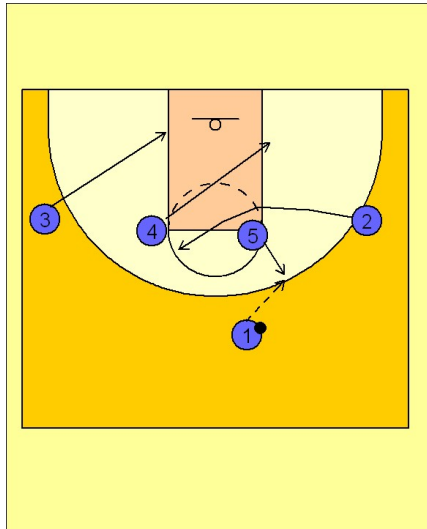


# Wisconsin

## Set play vs. man (2)

1



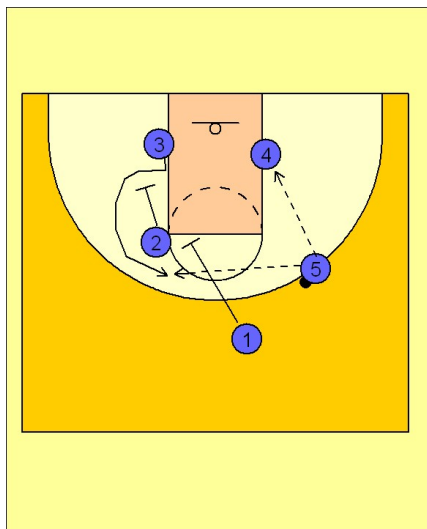
Wisconsin Set Play vs. Man Defense

1 - 4 high to start.

#5 steps out to receive the entry pass.

#2 cuts across to the left elbow area. #4 moves down to the ball side block while #3 moves down to the opposite low block.

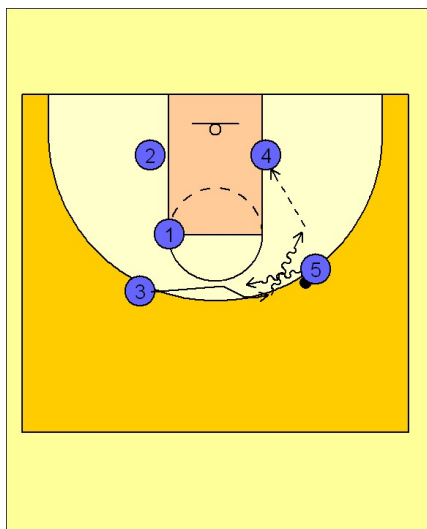
2



Wisconsin Set Play vs. Man Defense

Once #5 catches and turns he has a couple of options. He can first look to #4 isolated in the post. His back side help is being taken away by the screening action from #2 and #1, who are looking to set a double staggered screen away for #3.

3



Wisconsin Set Play vs. Man Defense

If #4 or #3 is not open, #5 will take the ball at #3 looking to execute a dribble hand off with #3. #3 takes the ball hard off the hand off and can look to shoot, drive and score or drive and dump it into #4.