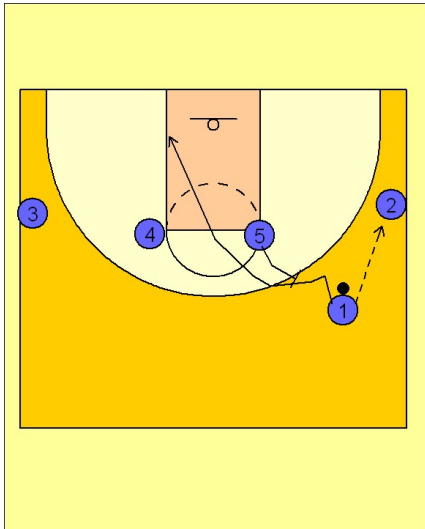


Wisconsin

Set play vs. man (3)

1

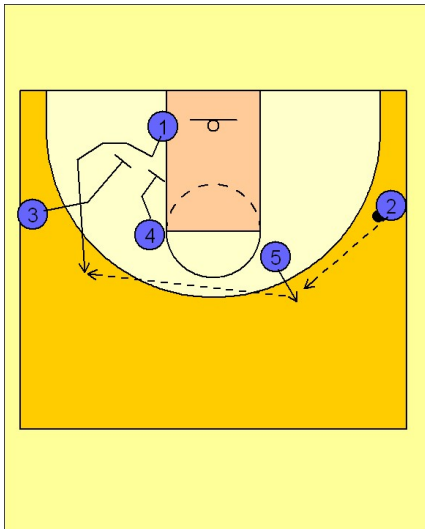


Wisconsin Set Play vs. Man Defense

1 - 4 high to start.

#1 enters to #2 on the right wing. #5 steps out and back screens for #1. #1 cuts through the lane and down to the opposite low block.

2

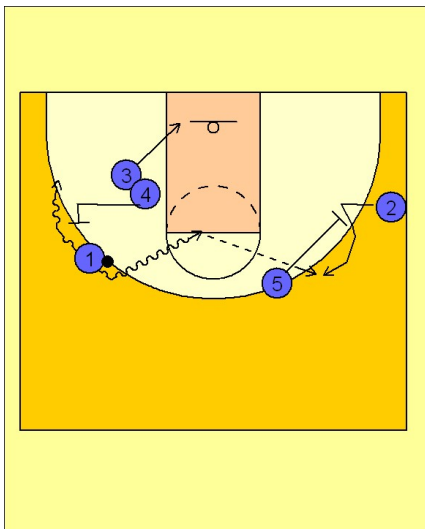


Wisconsin Set Play vs. Man Defense

#5 steps out after screening for #1. #2 passes to #5 who then turns and looks for #1 coming off the double down screen from #3 and #4.

#5 hits #1 coming off of the double down screen.

3



Wisconsin Set Play vs. Man Defense

Once #1 has the ball, #4 steps out to ball screen on either side for #1. #1 can look to take the ball in either direction, looking to score off the drive or create a drive and kick opportunity.

#5 is screening away on the back side to create a driving lane down the middle for #1.