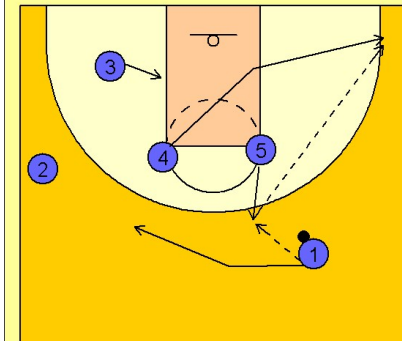


# Wisconsin

## Set play vs. man (4)

1

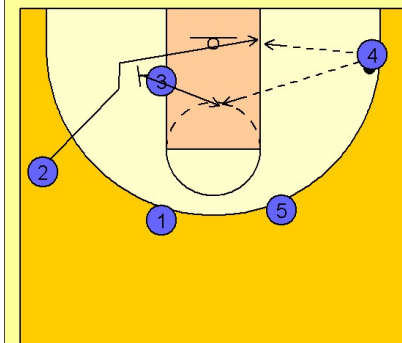
### Wisconsin Set Play vs. Man Defense



#5 steps out to receive the entry pass from #1. #1 passes to #5 and cuts away to the left side of the floor. As #5 catches the ball, #4 breaks to the right corner area and receives the next pass from #5. #3 now moves into the left low block area.

2

### Wisconsin Set Play vs. Man Defense

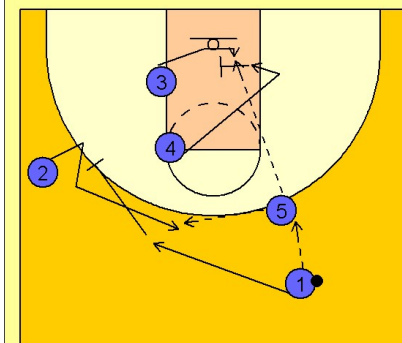


Once #4 has the ball, #3 sets a back screen for #2 who cuts underneath looking for the pass from #4 for the lay-up. As #2 cuts off the back screen, #3 flashes back to the ball in the middle of the lane looking for the pass from #4. This action is extremely effective if you can set a good screen on #2's defender and #3's defender has to help on the screening action.

3

### Wisconsin Set Play vs. Man Defense

Another option they will run on this play looks like this...



#5 receives the ball as in the last diagram, but #4, instead of running to the ball side corner to receive the next pass, will turn around and screen in the lane for #3. #5 will look to dump the ball down low to #3 coming off the screen in the lane. #1 will also screen away for #2 trying to free him for an open jumper on top.

This option is obviously keyed by what #4 does, either breaking to the corner or deciding to break off his route to the corner and screen in the lane for #3.