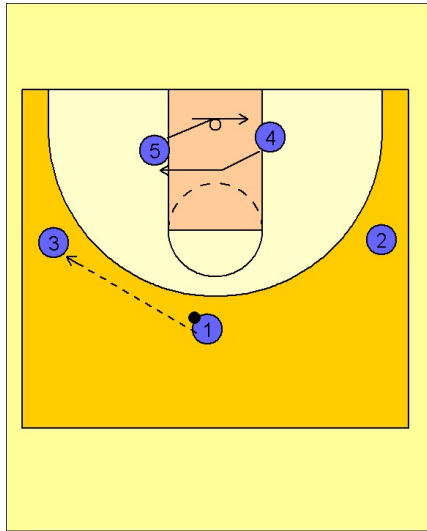


Wisconsin

Set play vs. man (5)

1

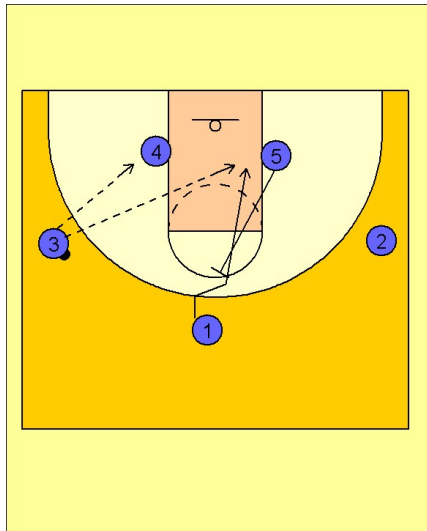


Wisconsin Set Play vs. Man Defense

A pretty simple, yet effective play.

#1 passes to #3 on the left wing while #4 and #5 exchange spots in what we like to call "false motion" (not really what they are looking for but trying to occupy the defense).

2



Wisconsin Set Play vs. Man Defense

#4 must post up hard on the left low block to occupy his defender. #5 now flashes up the lane and sets a back screen for #1 who cuts to the rim for the lob from #3.