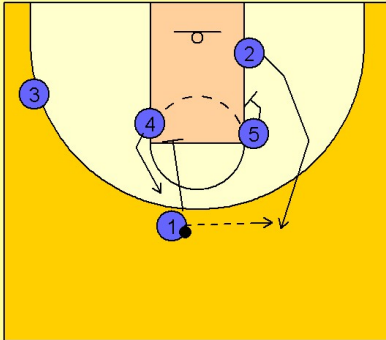


# West virginia

## Half ct. offense vs. man (2)

1

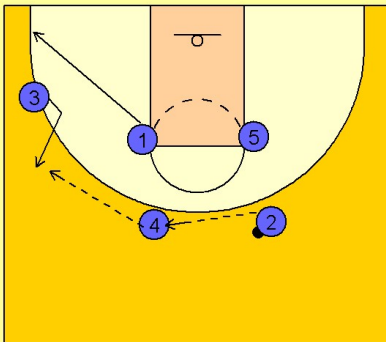
West Virginia Half Court Offense vs. Man Defense



#5 screens for #2 to get the offense started with an entry pass. As soon as #1 passes to #2 he down screens for #4.

2

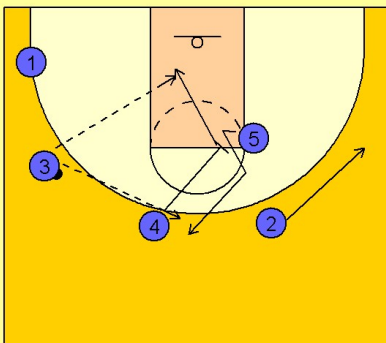
West Virginia Half Court Offense vs. Man Defense



After down screening, #1 breaks out to the left corner area. #2 passes to #4 on top and #4 passes to #3 on the left wing.

3

West Virginia Half Court Offense vs. Man Defense



As soon as #4 passes to #3, he down screens for #5. At anytime, the screener, #4, may cut to the basket just as he is screening looking for the quick hitting lay-up.

#2 flattens out to the right wing.

# West virginia

## Half ct. offense vs. man (2)

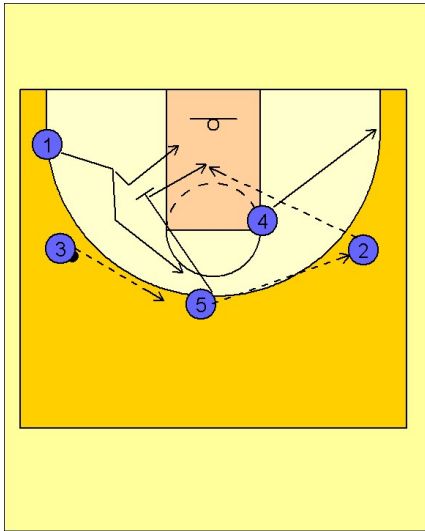
4

### West Virginia Half Court Offense vs. Man Defense

From here a distinctive pattern is developed.

#5 passes to #2 on the right wing and sets a down screen for #1 in the left corner / low block area. #1 pops up to the top of the key. At anytime, #5 may "slip the screen" and cut to the basket looking for the pass. Also, the person being screened, in this diagram #1, can fake high over the screen and cut to the basket for the lay-up.

If #1 cuts under, you can fill the top spot by having #3 fill the top spot. In any event, if #1 cut under the basket and #3 filled on top, #5 would step out and take #3's spot while #1 takes #5's spot.



5

### West Virginia Half Court Offense vs. Man Defense

Assuming #1 came to the top...he would receive the pass from #2 and look to reverse the ball to #3 on the left wing. Again, he would set a down screen for the right corner / low post man #4. #4 will again read the defense and look to break up or under the screen. Also, #1 can slip the screen before #4 uses it and cut to the basket looking for the pass from #1.

