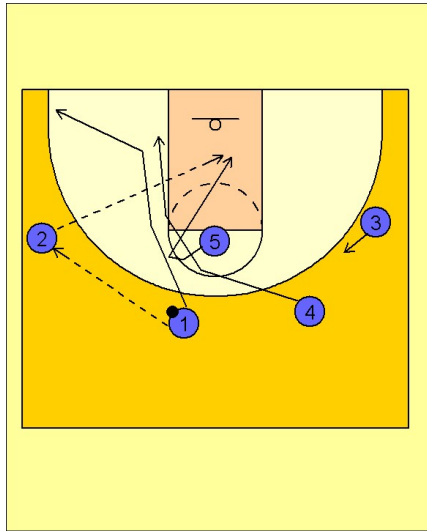


West virginia

Quick hitter vs. man (1)

1



West Virginia Quick Hitter vs. Man Defense

Usual 2 - 3 high alignment to begin.

#1 passes to #2 on the left wing. As in past plays, #1 and then #4 cut through to the left corner and left low block respectively.

As in previous plays, #5 cuts right behind #4 and #1 and starts to step out as if to be setting a ball screen for #2 and then cuts back door to the basket receiving the pass from #2.