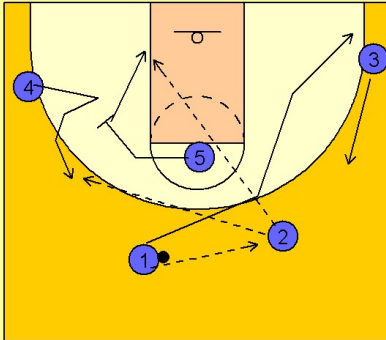


West virginia

Quick hitter vs. man (3)

1

West Virginia Quick Hitter vs. Man Defense

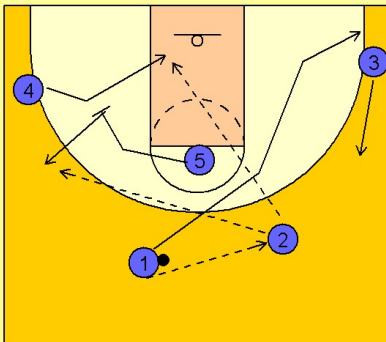


#1 enters the ball to #2 on top and then cuts to the ballside corner area. #3 slides up to the ballside wing area.

As #1 is cutting away, #5 sets a screen for #4. #4 may use the screen and break out to the left wing while #5 cuts to the left low block. Depending how the defense guards the screening action, #2 will look to make the pass to either #4 on top or #5 cutting to the basket.

2

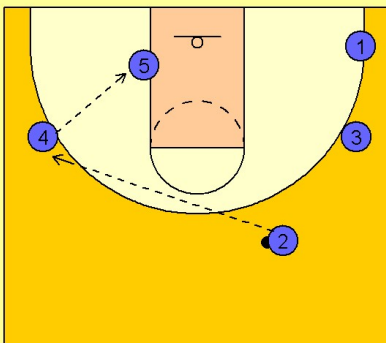
West Virginia Quick Hitter vs. Man Defense



#4 may also elect to fake high off the screen and cut backdoor to the rim looking for the pass from #2. #5 would read the cut by #4 and then break out to the left wing area looking for the pass from #2.

3

West Virginia Quick Hitter vs. Man Defense



However the offense decides to use the screening action, #2 will look to reverse the ball to the left wing area and then look to enter the ball on the left low block.