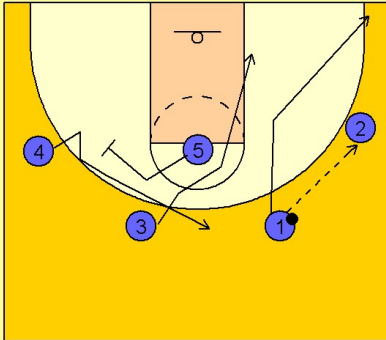


# West virginia

## Set play vs. man (1)

1

### West Virginia Set Play vs. Man Defense



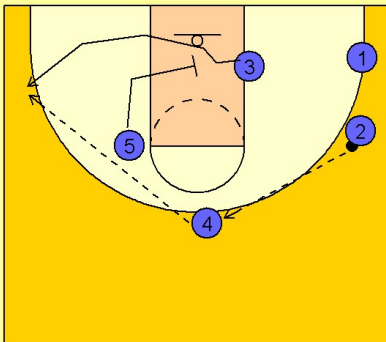
A key to having effective set plays is to start them from similar beginnings as to not tip off what play is coming. WVU does a very solid job of this usually starting everything they do in the 2 - 3 high alignment.

#1 passes to #2 on the right wing and cuts through to the ball side corner. #3 cuts behind #1 to the ball side low block.

#5 sets a screen for #4 trying to free him to receive the next pass on top.

2

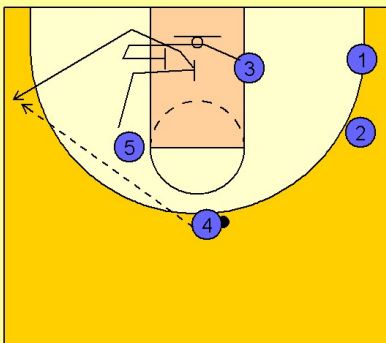
### West Virginia Set Play vs. Man Defense



#2 passes to #4 on top. #5 now sets a screen for #3 inside trying to free him for an open jumper on the left side corner / wing area.

3

### West Virginia Set Play vs. Man Defense



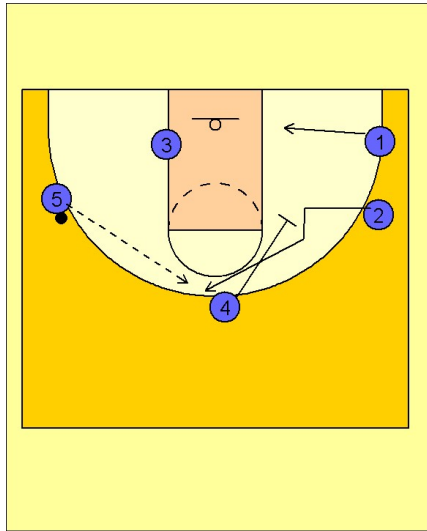
Another option, especially if #5 is a good outside shooter.

#3 comes off the screen as if he is the shooter going out to the left wing / corner area. He now stops his movement toward the corner and turns around and screens for the screener, #5. #5 now comes off the screen looking for the open jump shot on the left side of the floor.

# West virginia

## Set play vs. man (1)

4



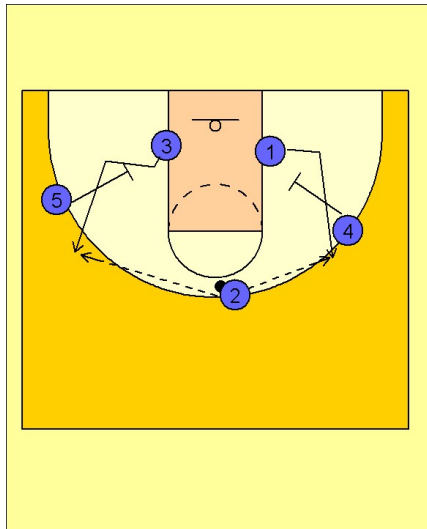
West Virginia Set Play vs. Man Defense

If either #5 or #3 receive the ball on the wing, the play will continue.

#4 screens away for #2 bringing him to the top. #1 starts his movement down towards the right low block area.

#5 passes the ball on top to #2.

5



West Virginia Set Play vs. Man Defense

From here they will try and free their shooters, #1 and #3, for open jumpers on either wing.