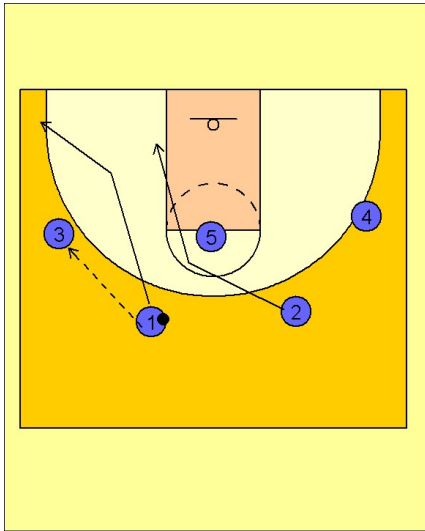


West virginia

Set play vs. man (8)

1

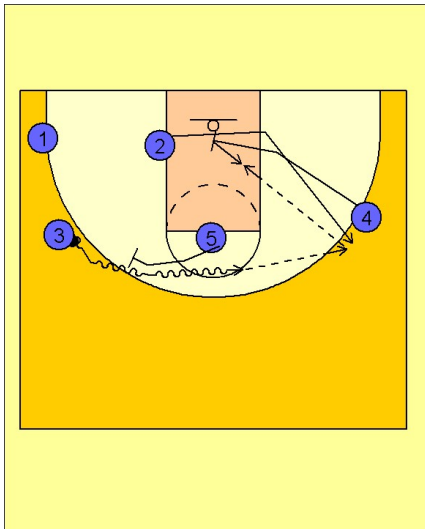


West Virginia Set Play vs. Man Defense

#1 enters the ball to #3 on the left wing and then cuts down and out to the ballside corner.

#2 cuts behind #1 to the ballside low block.

2



West Virginia Set Play vs. Man Defense

As soon as #1 and #2 have made their cuts, #5 steps out and sets a ballscreen for #3 on the left wing.

#3 comes over the top of the ballscreen while #4 moves down in the lane and sets a screen for #2.

#2 breaks out to the right wing looking for the open jumper.

If #2 does not take a shot, #4 will quickly post up and look for the entry pass from #2.