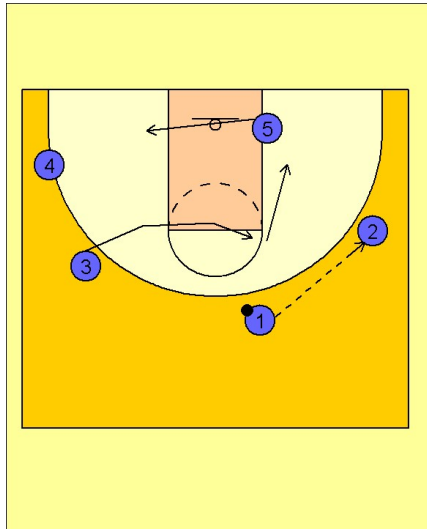


West virginia

Set play vs. zone (1)

1

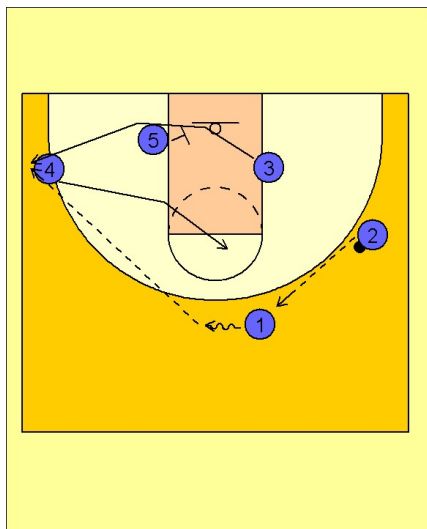


West Virginia Set Play vs. Zone Defense

#1 enters to #2 on the right wing. #5 cuts away from the ball to the opposite low block area.

#3 flashes into the high post as he usually does in their zone offense. Once #3 gets to the high post he cuts down to the ball side low block.

2

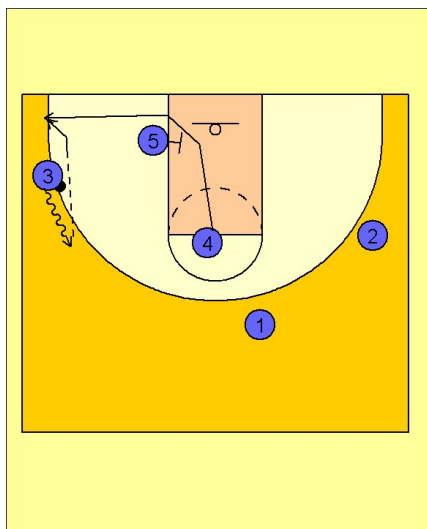


West Virginia Set Play vs. Zone Defense

#2 then reverses the ball on top to #1. #4 flashes into the high post while #3 comes off a screen on the left low block from #5.

#1 looks to hit #3 in the left corner area with a pass.

3



West Virginia Set Play vs. Zone Defense

If #3 does not have a shot, he dribbles up the sideline dragging the wing defender with him. While this is happening, #4 comes off a screen from #5 to the left corner looking for the pass from #3. Hopefully, if the wing defender goes with the dribble drag by #3, you will have a corner area void of defenders.