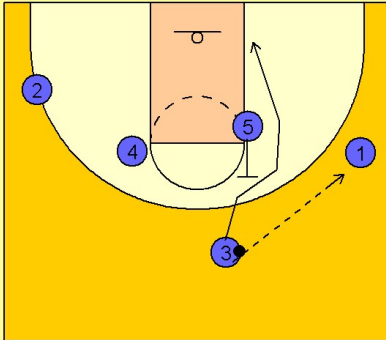


# Gonzaga

## Quick hitter vs. man (12)

1

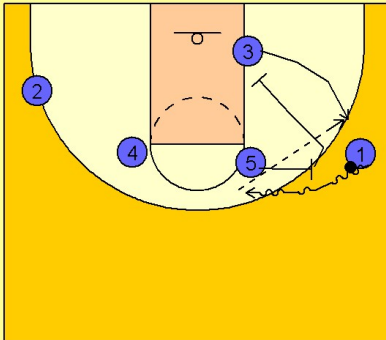
Gonzaga Set Play vs. Man



#3 enters to #1 on the right wing and receives a backscreen from #5. #3 cuts to the ballside low block area (commonly known as the UCLA cut).

2

Gonzaga Set Play vs. Man



#5 now steps out and executes a screen and roll with #1 on the right wing area.

As #1 comes off the ballscreen, #5 is rolling down to the right low block to set a screen for the shooter #3.