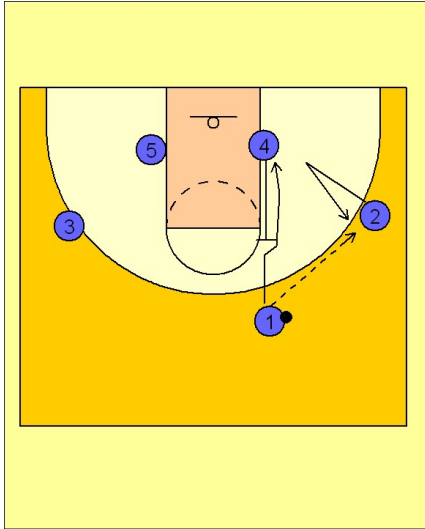


Gonzaga

Set play vs. man (1)

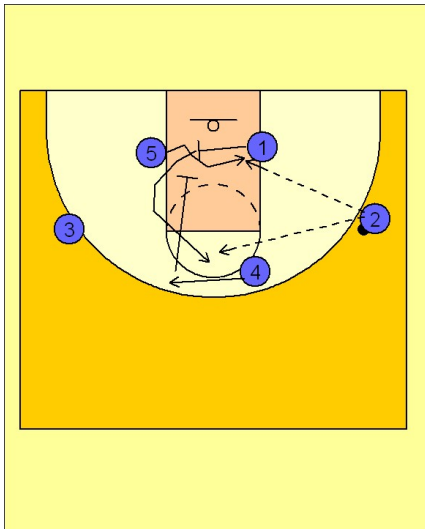
1



Gonzaga Set Play vs. Man

#2 makes a good cut to the basket and then back out to get open for the entry pass from #1. #4 slides up the lane and sets the back screen for #1, executing the famous "UCLA cut".

2



Gonzaga Set Play vs. Man

Once #1 gets to the block, he sets a cross screen for #5, posting him up on the ball side block. #4 slides over and then down to set a down screen for #1, creating a pick the picker action. #2 looks to post #5 on the block or #1 coming up to the top for a shot off the down screen from #4.