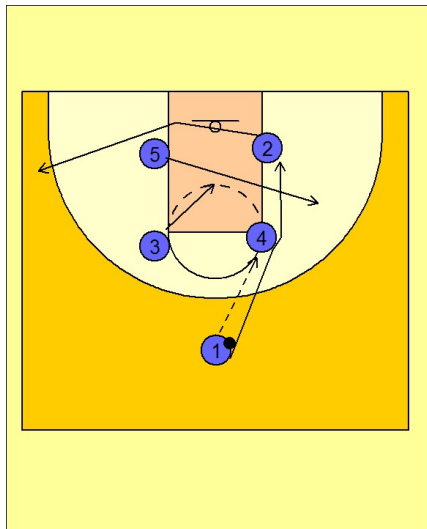


Gonzaga

Set play vs. man (11)

1

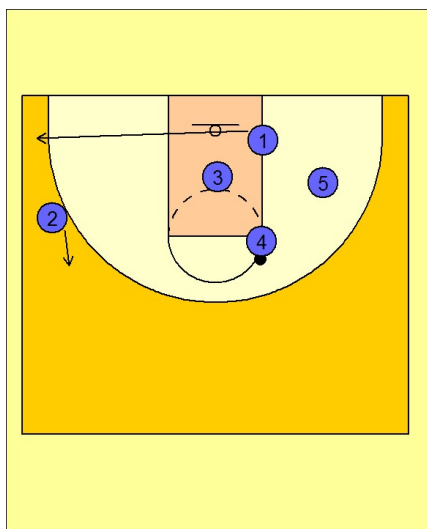


Gonzaga Set Play vs. Man

Box set to begin.

#1 enters the ball to #4 on the right free throw line elbow. #2 cuts out to the left wing, #5 breaks out to the right mid-wing area, #1 follows his pass and tries to get a hand-off from #4 for the lay-up, and #3 starts his cut down into the middle of the lane.

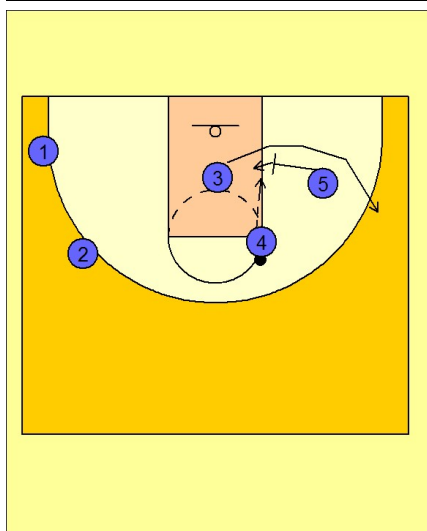
2



Gonzaga Set Play vs. Man

Now we have #4 will the ball at the elbow and #1 has cleared out to the left corner area.

3



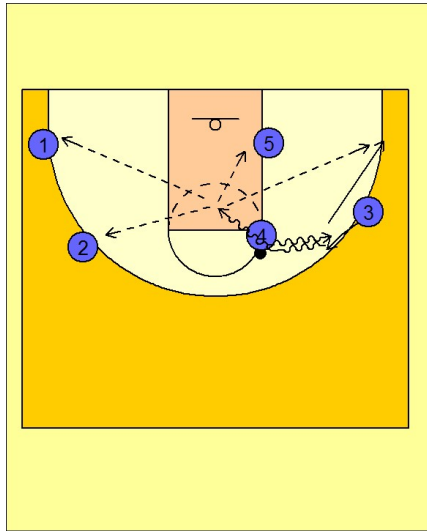
Gonzaga Set Play vs. Man

#3 now comes off the down screen from #5. #4 may look to hit #5 inside quickly if his defender helps on the screening action.

Gonzaga

Set play vs. man (11)

4



Gonzaga Set Play vs. Man

#4 can now hit #3 for the shot on the right wing, or, he can execute a dribble hand-off with #3.

#3 comes over the top, takes the hand-off from #4 and looks to get in the paint to score, dump to #5 underneath, kick out to #1, #2 or #4 spotting up on the perimeter.