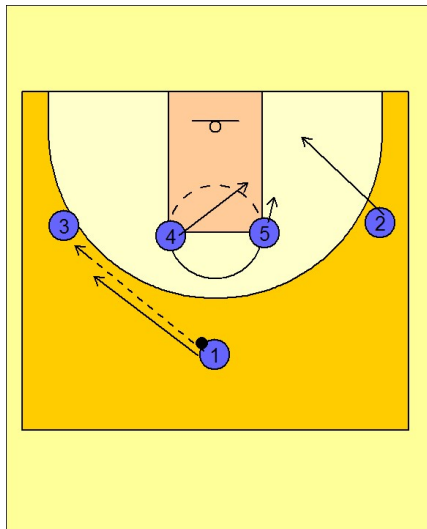


Gonzaga

Set play vs. man (13)

1

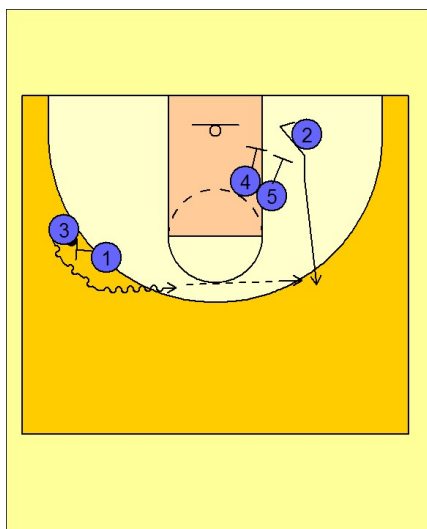


Gonzaga Set Play vs. Man

1 - 4 high to start.

#1 passes to #3 on the left wing and then cuts toward the ball. #2 cuts down towards the lane and #4 and #5 move over to set a double screen for #2.

2

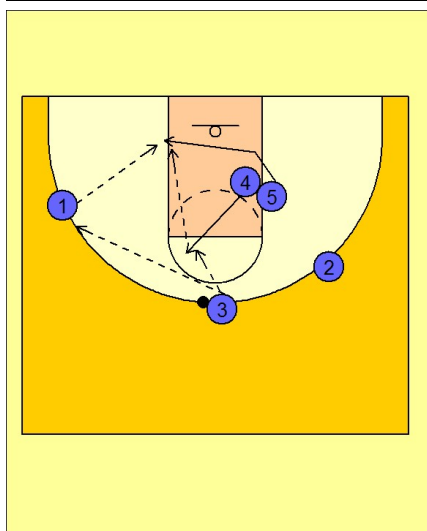


Gonzaga Set Play vs. Man

#1 sets a ball screen for #3. As #3 comes off the ball screen, #4 and #5 are screening for #2.

#3 makes the pass to #2 if he is open for a shot.

3



Gonzaga Set Play vs. Man

If #2 is not open, #3 passes the ball to #1 on the left wing. #5 slides down to the low post while #4 flashes to the high post. #1 and #4 will look to get the ball inside to #5.