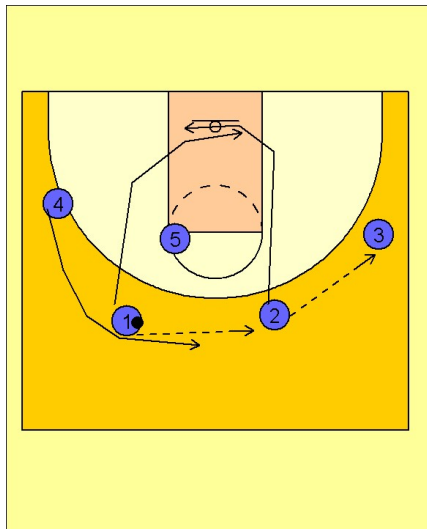


# Gonzaga

## Set play vs. man (14)

1



Gonzaga Set Play vs. Man

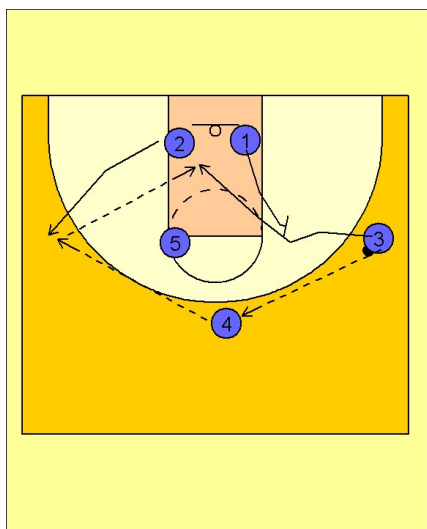
2 - 3 high alignment to begin.

#1 passes the ball to #2 on top who passes to #3 on the right wing.

After passing the ball, #1 and #2 cut into the lane and exchange sides of the floor underneath the basket.

#4 moves up to the high top of the key area.

2



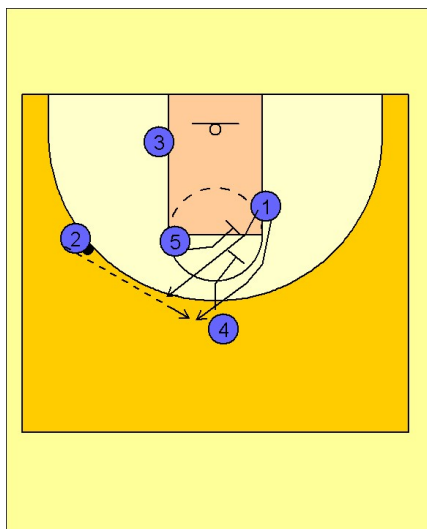
Gonzaga Set Play vs. Man

#3 reverses the ball to #4 on top who then passes to #2 breaking out to the left wing area.

#3, after passing to #4 on top, cuts into the lane off of a backscreen from #1.

#2 will look to hit #3 on the blocks if he is open.

3



Gonzaga Set Play vs. Man

If #3 does not get the ball, #5 and #4 are setting a double screen for #1 breaking to the top for an open jumper.

#1 may elect to come over the top of the double screen or split through the middle of #4 and #5.