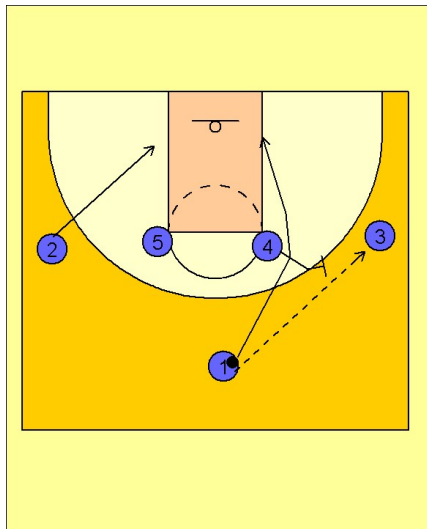


Gonzaga

Set play vs. man (15)

1



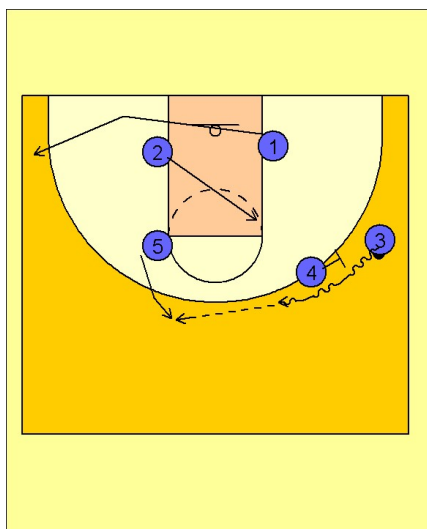
Gonzaga Set Play vs. Man

1 - 4 high set to begin.

#1 enters to #3 on the right wing and cuts through the ballside low block. At the same time, #2 is breaking down to the opposite low block area.

#4 begins to move out to set up a ballscreen for #3 on the right wing.

2



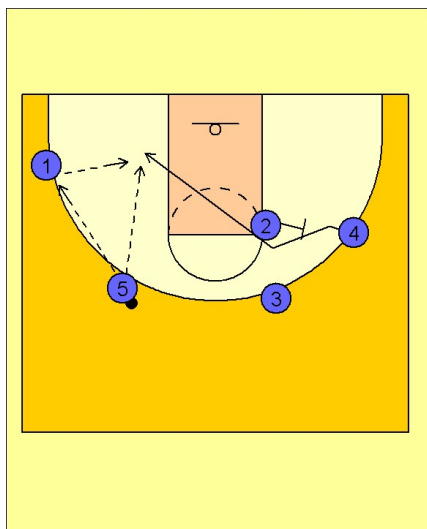
Gonzaga Set Play vs. Man

As #3 comes off the ball screen, #1 is breaking out to the left corner / wing area.

#5 steps out to receive the pass from #3.

#2 moves up to the freethrow line right elbow area.

3



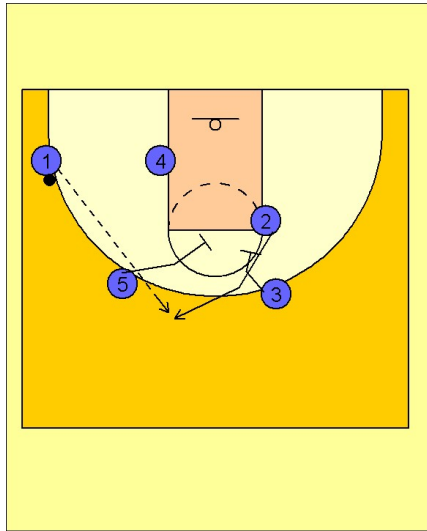
Gonzaga Set Play vs. Man

As soon as #3 passes the ball to #5, #4 cuts off of a backscreen from #2 and looks for the ball in the low post from either #5 or #1.

Gonzaga

Set play vs. man (15)

4



Gonzaga Set Play vs. Man

If #4 did not receive the pass, #5 and #3 set a double screen for #2 who breaks up on top for the open jumper.