

Gonzaga

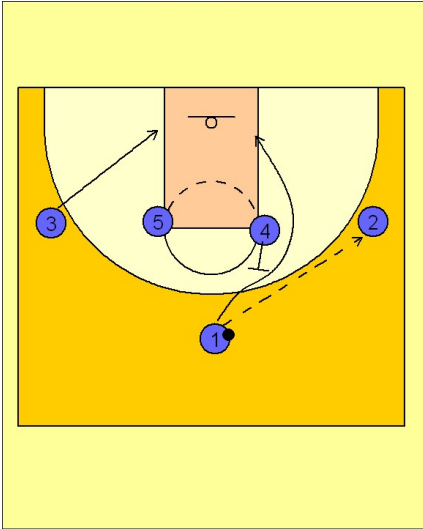
Set play vs. man (8)

1

Gonzaga Set Play vs. Man Defense

1 - 4 high across.

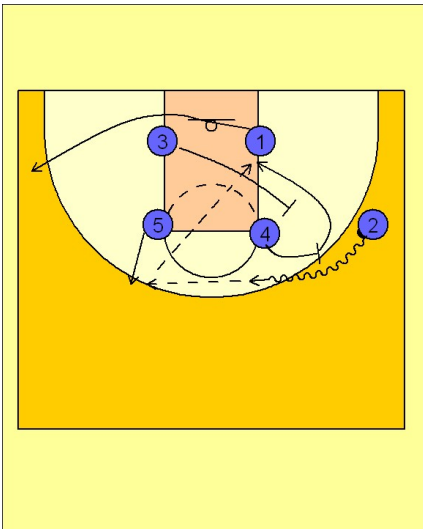
#1 enters the ball to #2 on the right wing. #4 back screens for #1 who cuts to the ball side block. #3 moves down to the opposite low block.



2

Gonzaga Set Play vs. Man Defense

#4, after screening for #1, steps out and ball screens for #2. As #2 is coming off the ball screen, #5 steps out to receive the next pass. #1 cuts out to the opposite wing area while #3 moves over to set a back screen for the screener (#4). #4 rolls to the basket looking for the lob pass or post pass from #5.



3

Gonzaga Set Play vs. Man Defense

If #4 is not open, #5 passes to #1 on the left wing and screens away for #3. #2 cuts to the opposite wing and the "Zags" are in their comfortable 3 out 2 in alignment ready to work the inside out game with two very talented post players and some great shooting perimeter players.

