

Gonzaga

Set play vs. man (9)

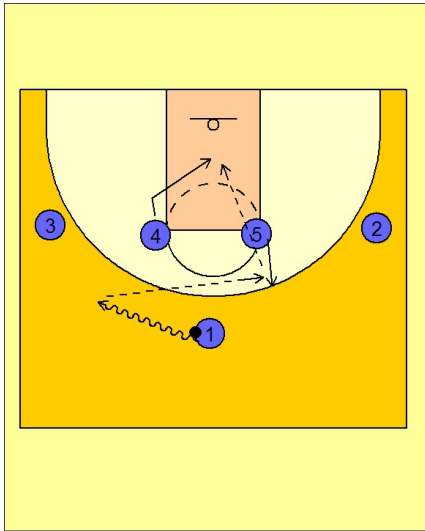
1

Gonzaga Set Play vs. Man Defense

1 - 4 high to start.

#1 dribbles at #3 on the left wing area. As he takes about three dribbles over, #5 steps out and receives the entry pass from #1.

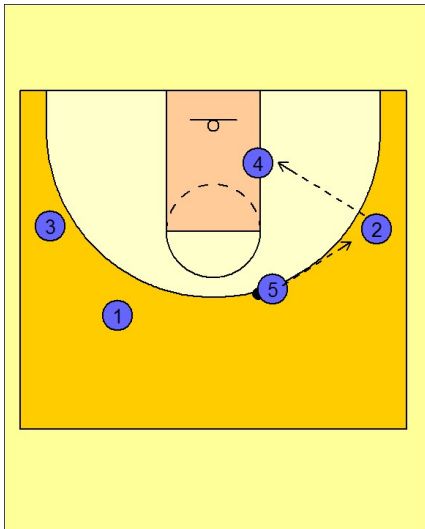
As #5 receives the ball, #5 looks to feed the ball over the top of the defender guarding #4.



2

Gonzaga Set Play vs. Man Defense

If #4 is not open, #5 passes to #2 on the right wing and #2 tries to feed #4 alone in the post with no weakside help.



3

Gonzaga Set Play vs. Man Defense

After #5 passes to #2 on the right wing, #5 and #1 double screen away for #3 on the left wing. This will occupy the weakside defenders, giving #4 more room to work in the post.

