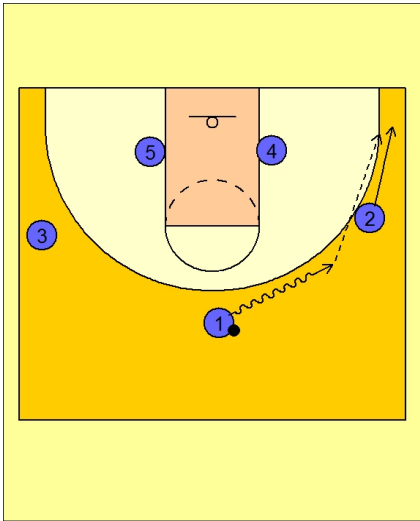




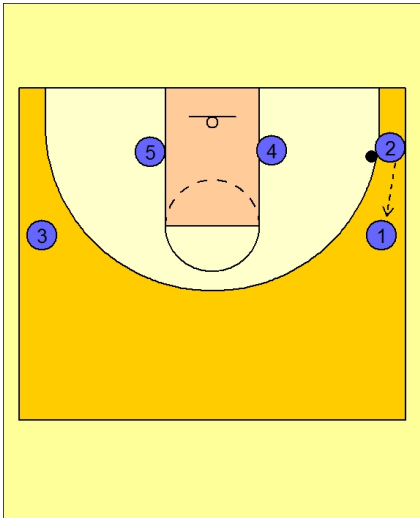
Zone set (5)



Gonzaga Zone Sets

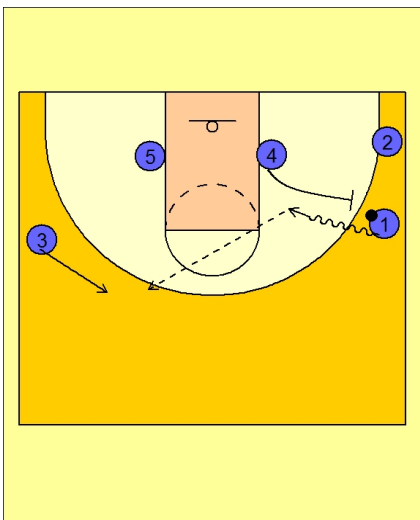
3 out / 1 in alignment.

#1 drives the ball to the right wing, pushes #2 to the corner and then passes to #2.



Gonzaga Zone Sets

#2 passes the ball back to #1 on the right wing.



Gonzaga Zone Sets

#4 steps out and ball screens for #1.

#1 attacks the lane looking to score or kick out to #3 spotting up on the perimeter.