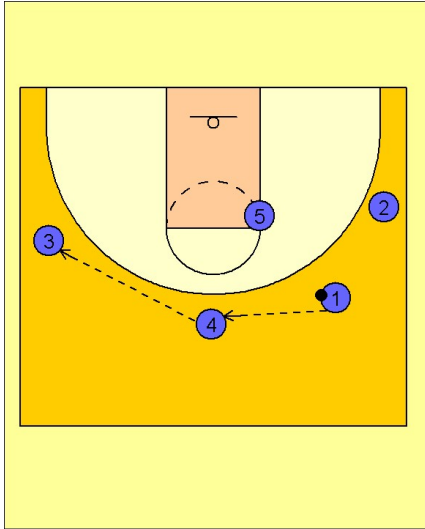


Boston college Early offense (2)

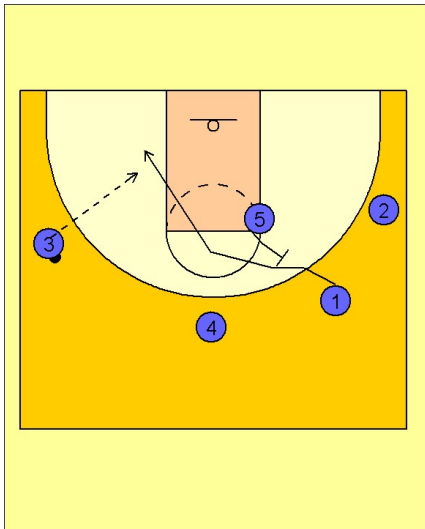
1



Boston College Early Offense

#1 reverses the ball to #4 on top who passes to #3 on the left wing.

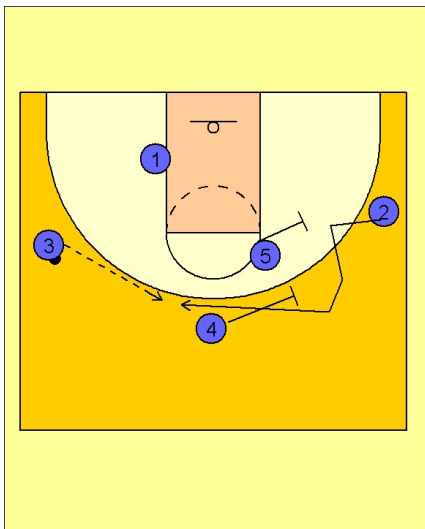
2



Boston College Early Offense

Once #3 has the ball, #5 sets a diagonal back screen for #1 who cuts to the ball side block.

3



Boston College Early Offense

As soon as #1 cuts through, #5 and #4 set a double screen away for #2 on the right wing.

From here BC goes into their flex offense or will call a set play.