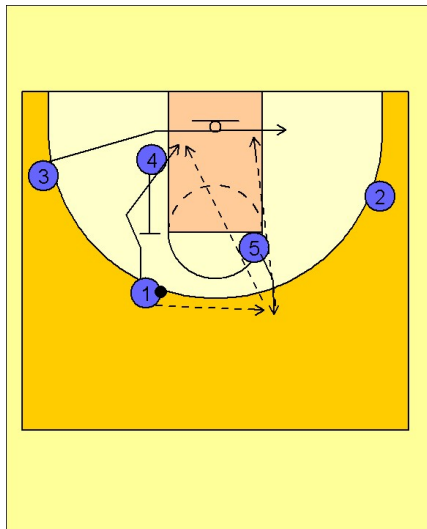


Boston college

Half court offense (3)

1



Boston College Half Court Offense vs. Man

This is more flex action from BC with the screening inverted a bit.

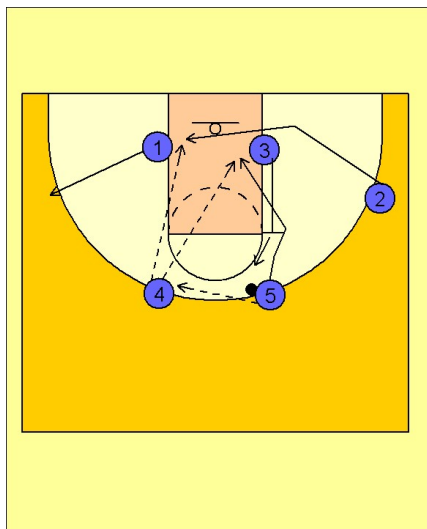
Instead of downscreens on ball reversal they will now set backscreens.

Here we see #1 reverse the ball to #5 stepping out to start the offense.

On the pass to #5, #3 is cutting underneath the basket looking for the pass from #5.

#4 is also setting a backscreen for #1 who cuts to the basket. #5 may look to hit #1 if he is open.

2



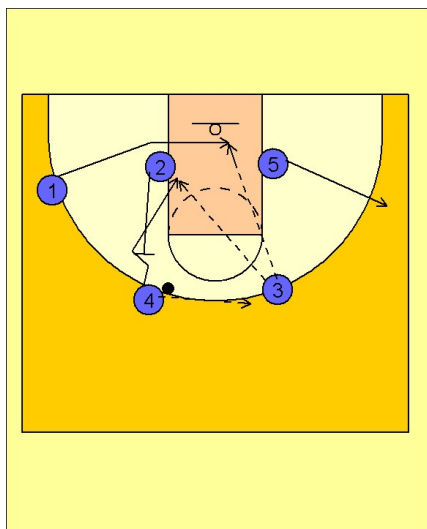
Boston College Half Court Offense vs. Man

If neither player is open, #5 passes the ball back to the other side of the floor to #4.

On the pass #1 is breaking out to the ballside wing while #2 is cutting down underneath the basket looking for the pass from #4.

At the same time, #3 is backscreening for #5. #5 cuts to the basket looking for the pass from #4.

3



Boston College Half Court Offense vs. Man

Again, if there were no shots or passes in the paint, the ball would be reversed back to #3, who has just popped out after the backscreen for #5.

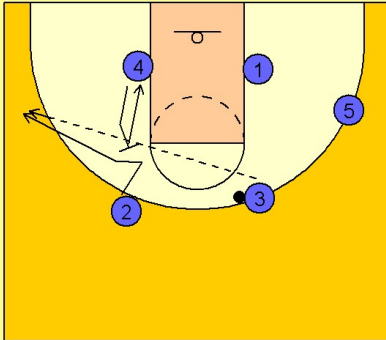
On the pass to #3, #5 is breaking out to the ballside wing while #1 cuts underneath the basket while #2 backscreens for #4.

Boston college

Half court offense (3)

4

Boston College Half Court Offense vs. Man

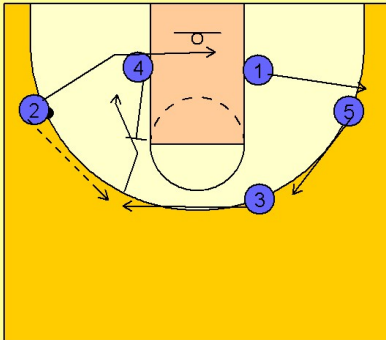


Whenever a backscreen is being set for a shooter, the shooter, #2 in this diagram, has the option to fade to the wing for the open jumper.

#3 passes over the top to #2 on the left wing. On the pass #4 cuts down to the low post.

5

Boston College Half Court Offense vs. Man



#3 would then break towards the ball while #5 moves up and #1 breaks out and the offense continues.