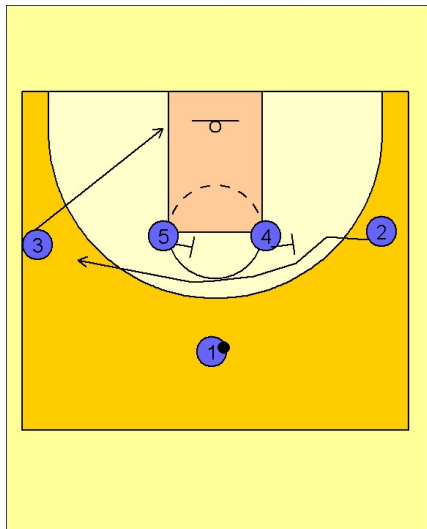


Boston college

Quick hitter (4)

1

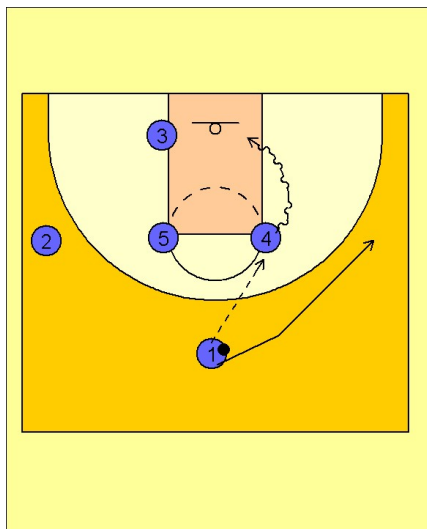
Boston College Quick Hitter vs. Man Defense



1 - 4 high to begin. #4 and #5 screen across the top for #2 breaking to the left wing. #3 leaves the left wing area and moves down to the left block.

2

Boston College Quick Hitter vs. Man Defense



#1 now enters the ball to #4 in the high post right elbow area. #1 fades to the ball side wing while #4 spins and looks to attack the basket.