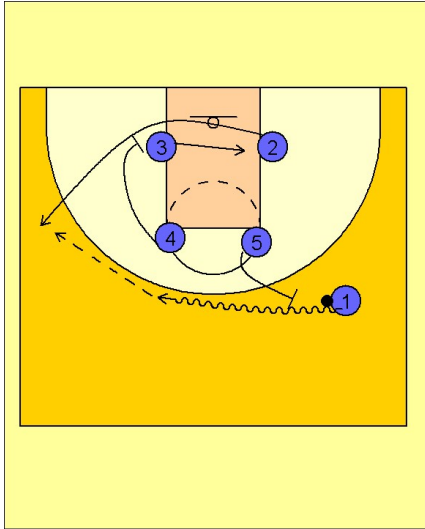


Boston college

Set play vs. man (1)

1

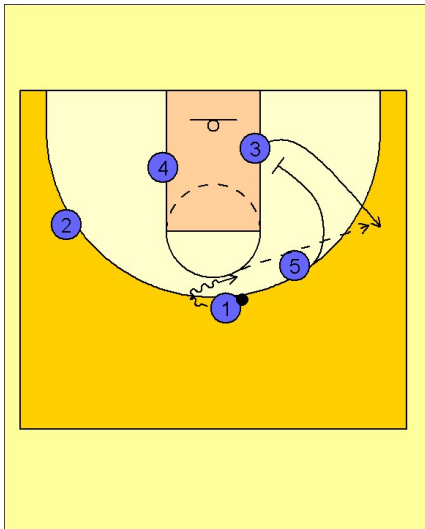


Boston College Set Play vs. Man

Box set to begin.

#1 uses a ball screen from #5 while #3 comes over to the right low block and #2 curls out underneath off a down screen from #4. #1 looks to hit #2 for an open jumper on the left wing.

2



Boston College Set Play vs. Man

If #2 is not open, #1 takes the ball back to the right and looks for #3 coming off the down screen from #5.