

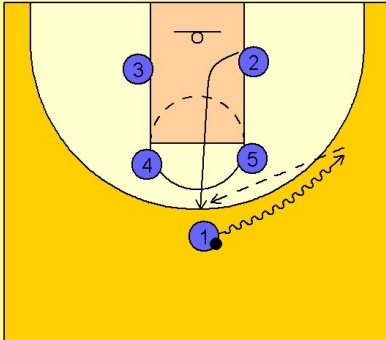
Boston college

Set play vs. man (2)

1

Boston College Set Play vs. Man

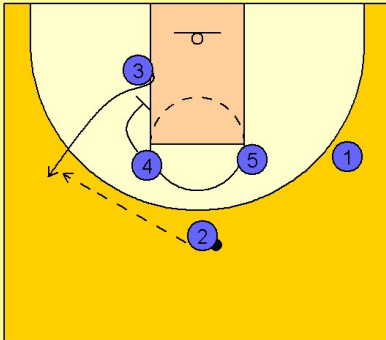
Box set to begin. #1 drives the ball over to the right wing while #2 cuts up the middle to the top of the key to receive the entry pass from #1.



2

Boston College Set Play vs. Man

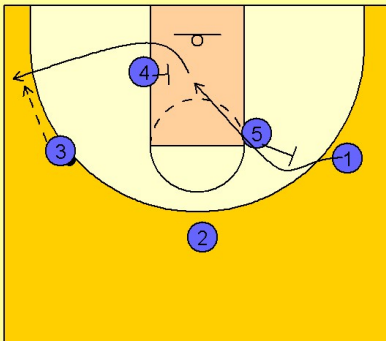
#4 now down screens for #3 while #2 looks to hit #3 on the left wing.



3

Boston College Set Play vs. Man

#5 now back screens for #1. #1 cuts over the top of the screen and into the lane. #4 now sets another screen for #1 down near the left low block trying to free him for a jumper in the left corner / wing area.

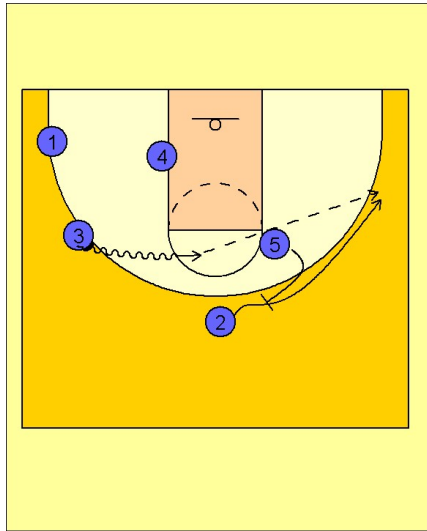


Boston college

Set play vs. man (2)

4

Boston College Set Play vs. Man



If #1 is not open, #5 will set a back screen for #2. #2 cuts over the top of the screen from #5 and fades to the back side of the court. #3 takes the ball on the dribble into the free throw line area looking to score or pass over the top to #2 on the right wing.