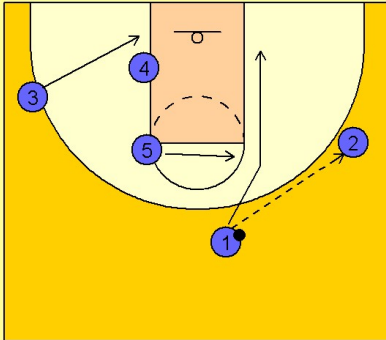


Boston college

Set play vs. man (3)

1

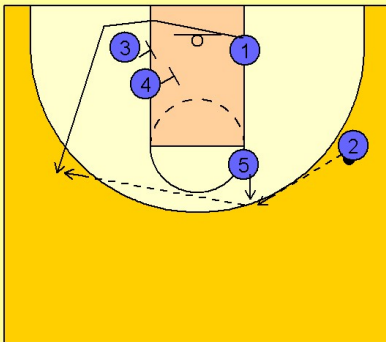
Boston College Set Play vs. Man



#1 enters to the right wing and cuts down to the right low block. #5 flashes to the right free throw line elbow area while #3 moves down to set a double screen with #4 on the left low block.

2

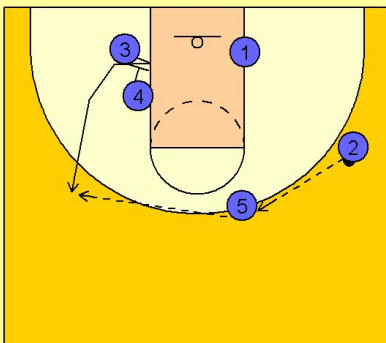
Boston College Set Play vs. Man



From here BC has a few options. First, #5 can step out and receive the pass and look for #1 coming off the double screen from #3 and #4.

3

Boston College Set Play vs. Man



Another good option is for #3 to fake as if he is in the double screen and then take a screen from #4 to get open for the shot on the left wing.

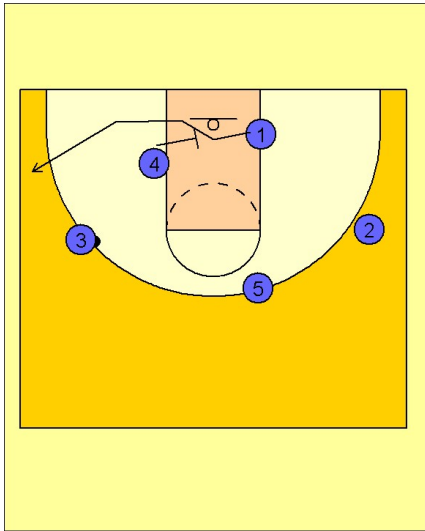
Boston college

Set play vs. man (3)

4

Boston College Set Play vs. Man

If #3 did not have a shot, #1 would use the single screen from #4 on the left block.



5

Boston College Set Play vs. Man

Of course, the old stand-by would be for #5 to set a ball screen for #2 and execute the pick and roll while #1 comes off the double screen.

