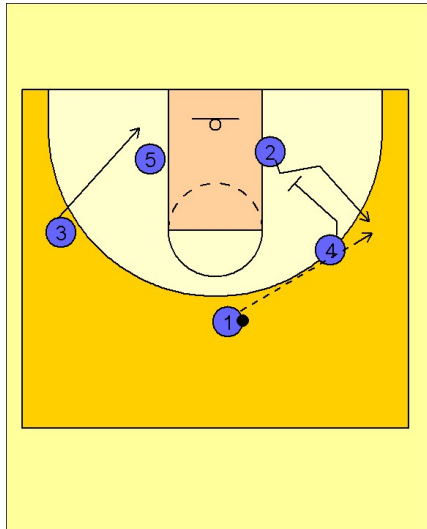


Boston college

Set play vs. man (4)

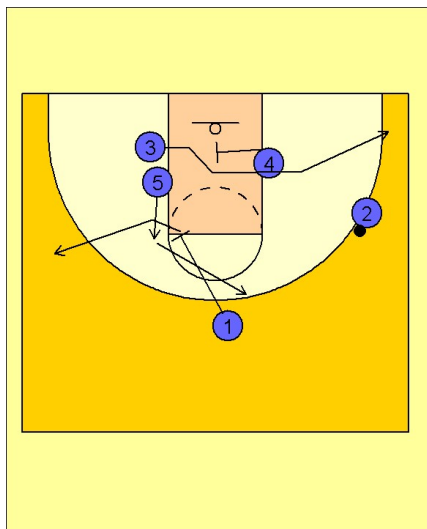
1



Boston College Set Play vs. Man

#4 down screens to get the ball entered to #2 on the right wing. #3 moves down as if to set up in a double screen with #5 on the left low block.

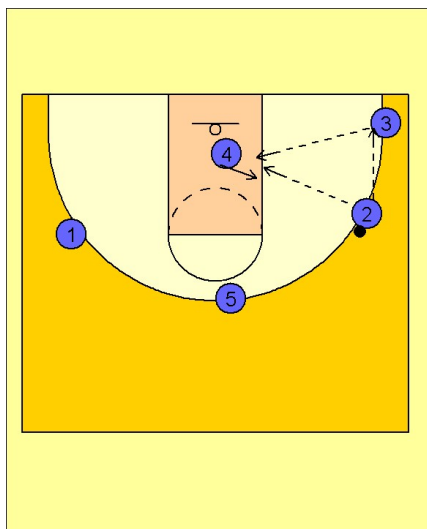
2



Boston College Set Play vs. Man

Once #2 has the ball, #4 screens in the middle of the lane for #3 cutting across and out to the ball side corner. As this is happening, #5 flashes to the high post and out to the top of the key off of a down screen from #1. #1 breaks out to the left wing after screening.

3



Boston College Set Play vs. Man

What BC has just created is a nice isolation for #4 inside pinning and sealing looking for the post entry pass from #2 or from #3 if the defense tries to play on the high side.