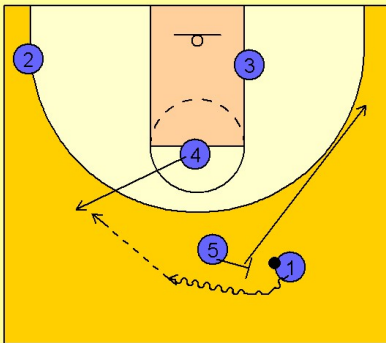


Boston college

Set play vs. man (5)

1

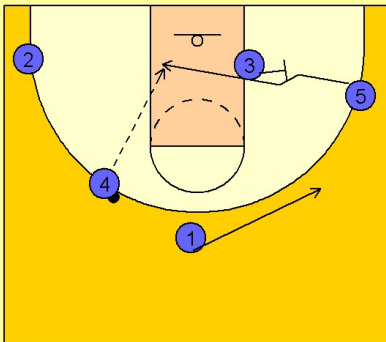
Boston College Set Play vs. Man



#5 ball screens for #1 out on top to start the play. As #1 drives over the top of the ball screen, #4 is stepping out from the free throw line area to receive the entry pass from #1. #5 screens and rolls to the right wing area.

2

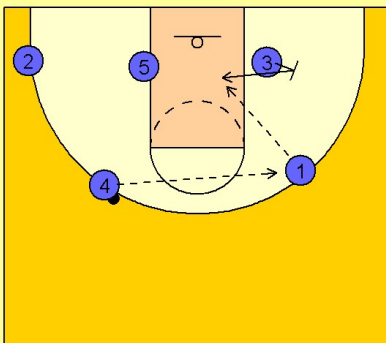
Boston College Set Play vs. Man



Once #4 has the ball, #3 is setting a back screen for #5 cutting over the top and into the lane. #4 will look to feed #5 inside if he is open. #1, after passing to #4, is flattening out to the right wing area.

3

Boston College Set Play vs. Man

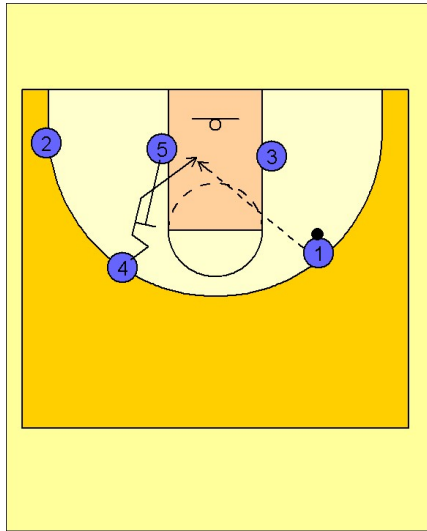


As #5 comes over #3's screen, #3 is looking to step in the lane and seal his defender in the paint. The ball is quickly reversed from #4 to #1 and inside to #3.

Boston college

Set play vs. man (5)

4



Boston College Set Play vs. Man

If #1 can't feed the post, #5 is back screening for #4 who cuts to the rim looking for the lob from #1.