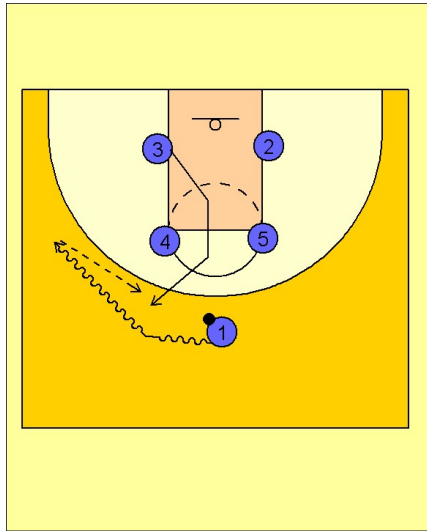


Boston college

Set play vs. man (6)

1

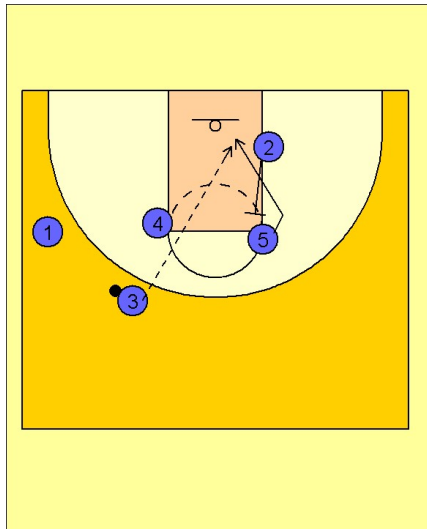


Boston College Set Play vs. Man

Box set to begin.

#1 drives the ball to the left wing. As the ball is brought over, #3 breaks up through the middle and toward the left side to receive the entry pass from #1.

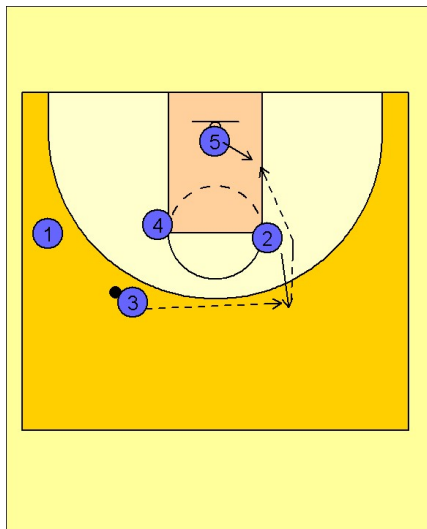
2



Boston College Set Play vs. Man

Once #3 has the ball, #2 sets a back screen for #5. #5 cuts to the rim looking for the lob pass from #3.

3



Boston College Set Play vs. Man

If the lob is not available, #2 will step out after back screening and receive the pass from #3. #5 will then work hard for post position and #2 will look to dump it inside to #5.