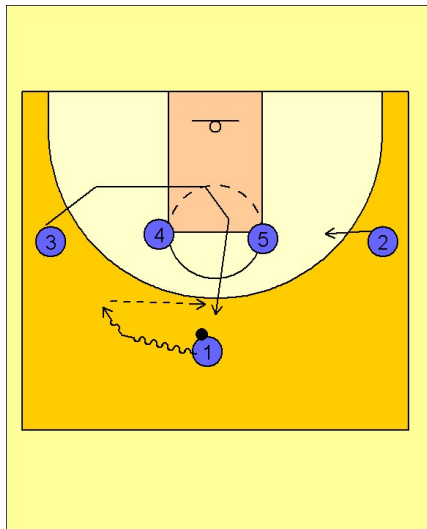


# Boston college

## Set play vs. man (8)

1



Boston College Set Play vs. Man

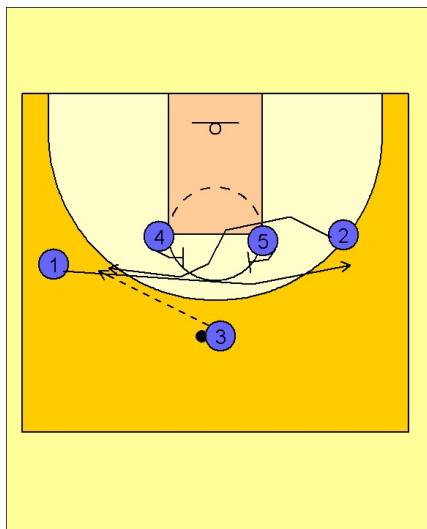
1 - 4 high set to begin.

#1 chooses a side and dribbles at the wing player.

Here #1 dribbles at the left wing player #3. #3 cuts into the lane and up through the middle to receive the pass from #1.

#1 then takes the spot just vacated by #3.

2

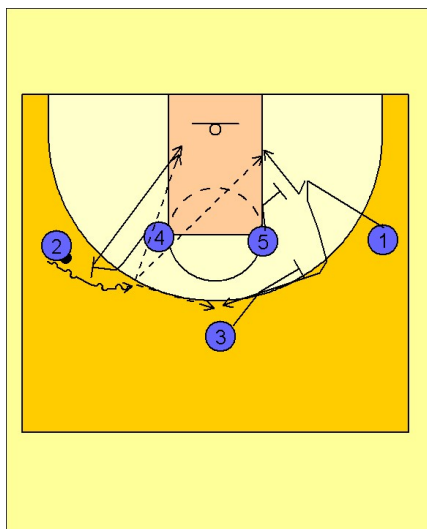


Boston College Set Play vs. Man

Once #3 has the ball, #1 and #2 exchange spots using a screen from the opposite post player, #4 of #5.

#3 can enter to either wing. Here we see #3 pass to #2 on the left wing.

3



Boston College Set Play vs. Man

Once #2 has the ball, #4 steps out and executes a screen and roll with #2.

#5 and #3 set a double staggered screen on the opposite wing for #1.

#5 will look to cut to the basket after screening when #1 decides to break to the top.