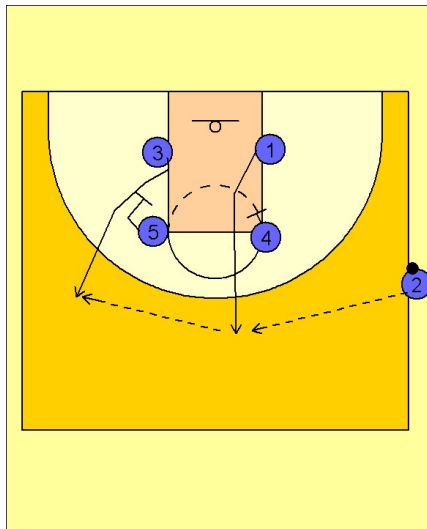


# Boston college

## Side ob (1)

1

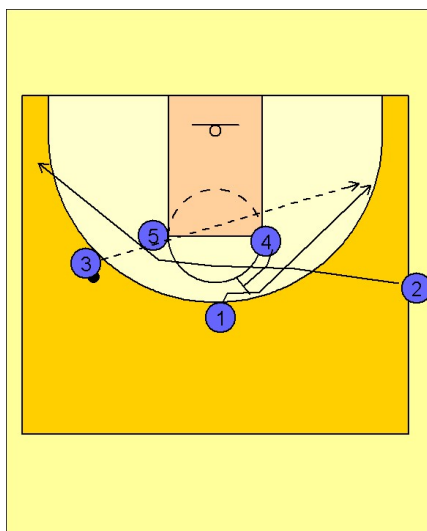


Boston College Side OB

Box set to begin.

#4 screens for #1 who pops straight up to the top of the key area to receive the entry pass from #2. #5 times his screen so #3 can get open to receive the next pass on the left side of the floor.

2



Boston College Side OB

After #2 inbounds the ball to #1 on top he cuts through the free throw line area out to the left wing / corner area of the floor.

As #2 cuts through, #4 steps up and sets a back screen on #1's defender. #1 fades to the right wing looking for the skip pass over the top from #3.