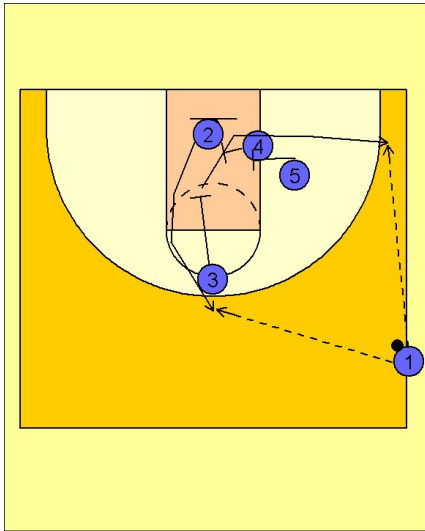


Boston college

Side ob (3)

1

Boston College Side OB

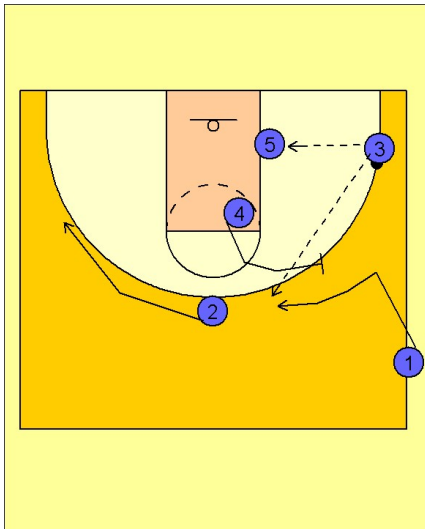


The play starts with #3 setting a downscreen in the middle of the lane for #2. #2 breaks to the top of the key area looking for the open jumper.

After #2 comes off the screen by #3, #4 and #5 are ready to set a double staggered screen for #3 to break to the ballside corner area.

2

Boston College Side OB



If #3 receives the ball and does not have a shot, he will look to feed #5 isolated in the low post or look to hit #1 stepping in and using a screen from #4 to get open on the perimeter.

#2 clears to the other side of the floor.