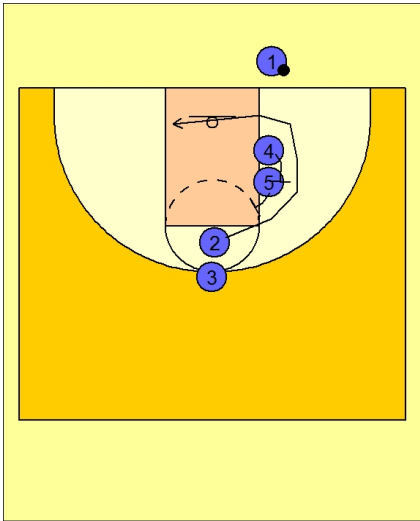




**Ob under vs. man 1**

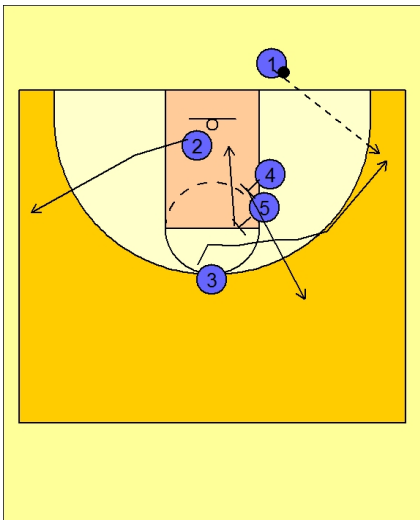


**Butler OB Under vs. Man Defense**

#1 and #2 are stacked at the FT line while #4 and #5 are stacked near the ball side low block area.

All Butler OB plays start with the referee handing the ball to the inbounds player, not on a ball slap.

#2 starts by cutting around the double screen from #4 and #5. #2 curls around the screen and under the basket.

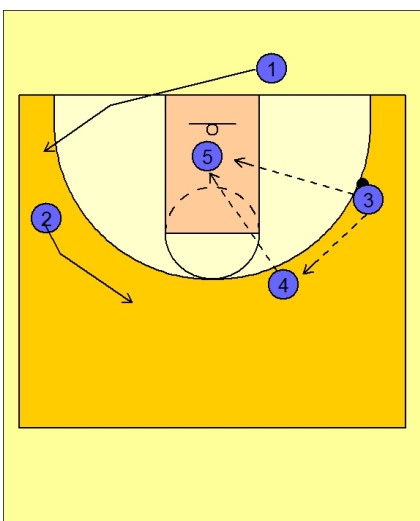


**Butler OB Under vs. Man Defense**

#3 follows shortly behind #2 and cuts over the double screen to the right wing.

#2 cuts out to the left wing area.

As #3 cuts off the double screen, #4 cuts out on top while #5 cuts to the rim.



**Butler OB Under vs. Man Defense**

If #3 is not open, he will look to pass inside to #5 or pass out on top to #4 who might have a better passing angle inside to #5.