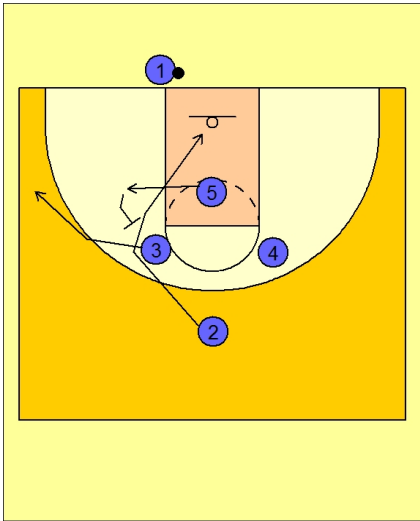




Ob under vs. man 10

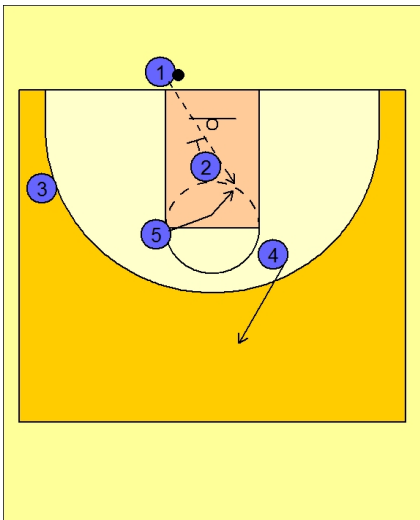


Butler OB Under vs. Man

Good action here as the play starts with #5 cutting out to the wing and then turns back to screen #3.

First #2 cuts off the back of #3 and then #3 uses the screen from #5.

#2 cuts to the front of the rim area.



Butler OB Under vs. Man

The action is mostly misdirection, as the option they are really looking for is #2 screening in the lane while #5 cuts behind him for the lob.

This could be used against man and zone.