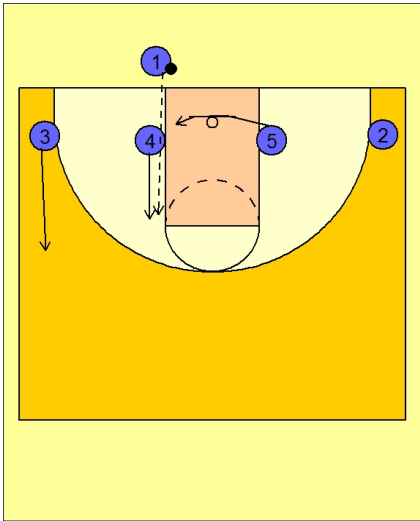




Ob under vs. man 5



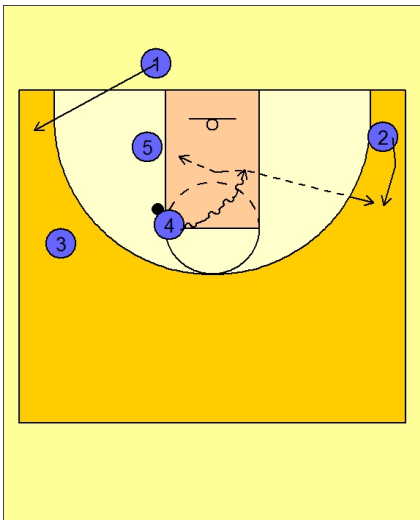
Butler OB Under vs. Man Defense

1 - 4 across to begin.

On the referee hand-off to #1, #4 breaks back to the FT line elbow area.

#3 breaks up to the wing area.

#1 uses a pop pass to #4 while #5 is cutting under the basket to the ball side low block.



Butler OB Under vs. Man Defense

On the catch, #4 will look to attack the rim to score or dump the ball off depending on whose defender comes to help, #5 or #2.