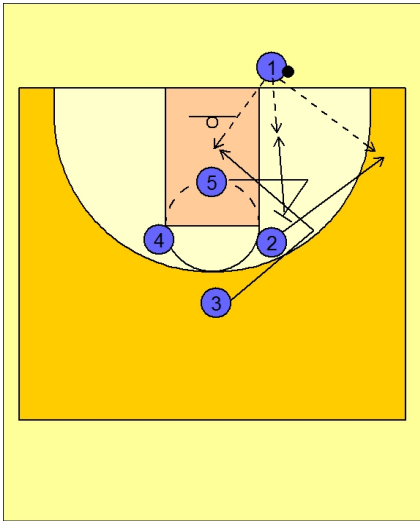




**Ob under vs. man 7**



**Butler OB Under vs. Man**

Play starts with #5 cutting to the right corner. He stops short and then cuts back to screen for #2.

As #5 is making this cut, #3 is starting to cut toward the right corner. #3 then turns his cut towards the basket.

#5 then screens for #2 AFTER #3 cuts through. #2 cuts to the corner to receive the entry pass.

#1 can also look for #3 in the middle of the lane or left block area OR #5 screening and rolling back to the basketball.