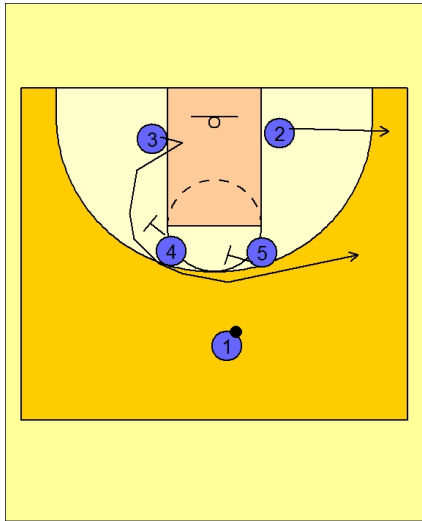




### Quick hitter vs. man 3



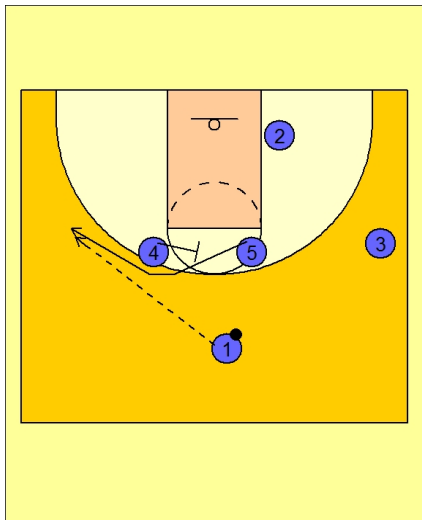
#### Butler Quick Hitter vs. Man Defense

Box set to begin.

#4 and #5 set a double staggered screen for #3.

#3 curls over the top of the screen.

#2 breaks out to the right corner.



#### Butler Quick Hitter vs. Man Defense

The first action is more of a misdirection play as what they are looking for most of the time is #4 now screening for #5.

#5 breaks to the left wing off the screen from #4 for the open jump shot.