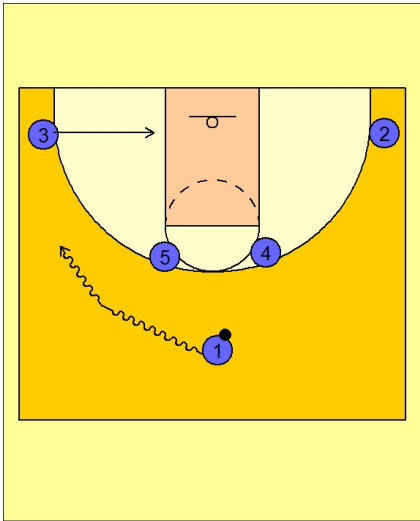




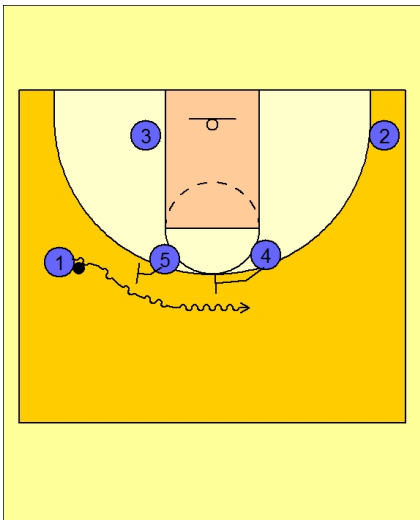
### Set play vs. man 1



#### Butler Set Play vs. Man Defense

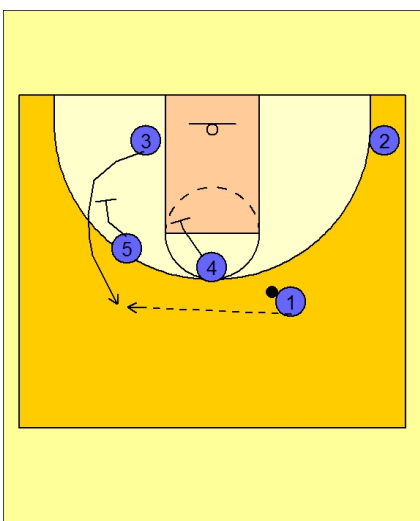
#1 drives the ball to the left wing.

#3 cuts into the low block area on the ball side.



#### Butler Set Play vs. Man Defense

#1 keeps his dribble and then turns back and uses a double staggered screen from #5 and #4.



#### Butler Set Play vs. Man Defense

Once #1 comes off the double staggered screen, #4 and #5 set a double staggered down screen for #3.

#1 looks to pass to #3 for the open jump shot on top.



**Butler Set Play vs. Man Defense**

If #3 is not open, #4 breaks out to the left wing while #5 cuts to the low post.

#3 will look to pass to #4 on the wing who will then look to dump the ball inside to #5.

