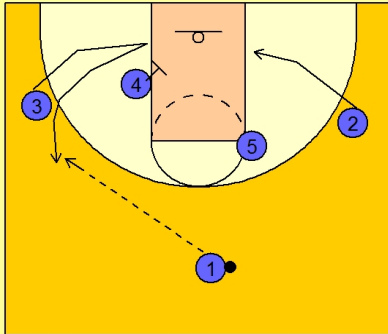




Set play vs. man 12

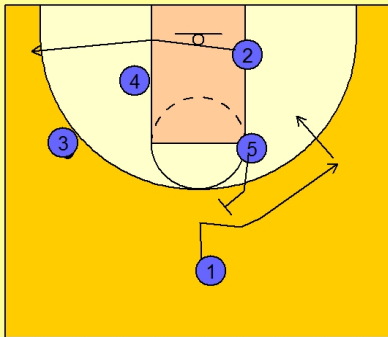


Butler Set Play vs. Man Defense

#3 takes his man into the lane and then uses a down screen from #4.

#1 enters the ball to #3 on the left wing.

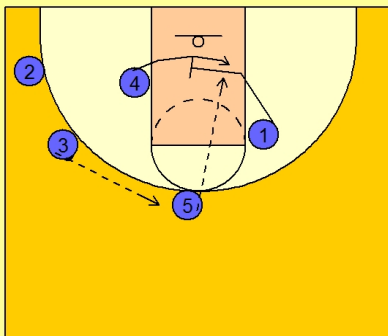
#2 cuts down to the right low block.



Butler Set Play vs. Man Defense

#5 sets a flare screen for #1.

#2 cuts to the ball side corner while #1 cuts over the top of the screen from #5.



Butler Set Play vs. Man Defense

If #1 does not get the ball, #5 steps out and receives the pass from #3.

#1 screens in the lane for #4. #5 looks to pass inside to #4.