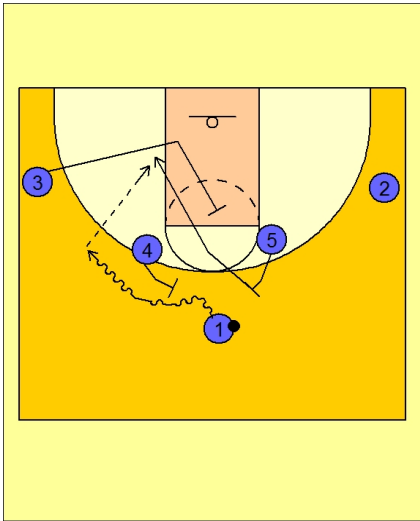




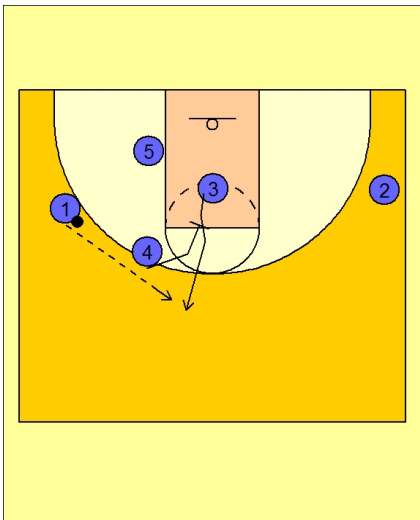
Set play vs. man 14



Butler Set Play vs. Man

#4 and #5 set up for the ball screen in either direction on top.

#1 takes the ball to either wing off the ball screen. The ball side wing cuts into the lane and then makes a diagonal cut up to screen for the opposite post player, #5 in this diagram.



Butler Set Play vs. Man

If #5 is not open, #4 "picks the picker" and sets a down screen for #3.