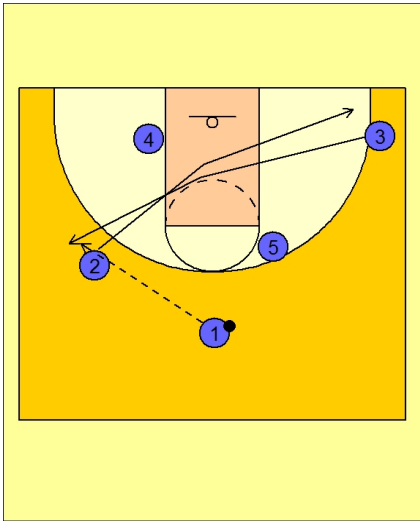




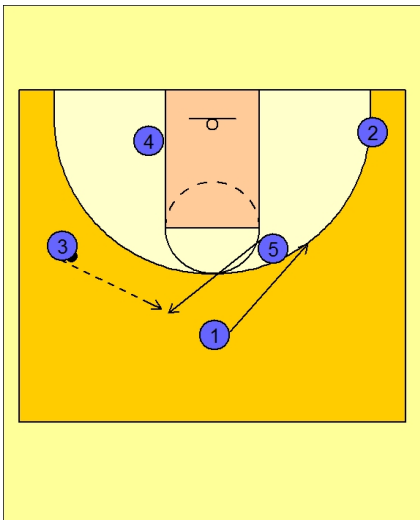
Set play vs. man 16



Butler Set Play vs. Man

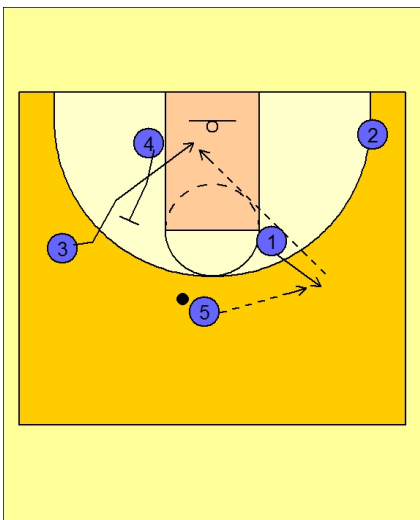
#2 and #3 interchange to start the play.

#1 enters the ball to #3 on the left top wing area.



Butler Set Play vs. Man

After #1 passes he cuts away to the opposite wing area while #5 steps out to receive the next pass from #3.



Butler Set Play vs. Man

#1 now cuts out to the top right wing area to receive the next pass from #5.

As soon as #5 makes the pass to #1, #4 is back screening for #3.

#1 looks to make the lob pass to #3 cutting to the rim.



Butler Set Play vs. Man

If the lob is not there, #5 "picks the picker" and down screens for #4, trying to free him up for the open jump shot on top.

