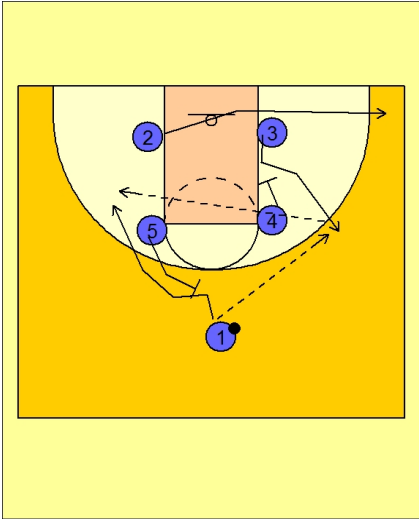




Set play vs. man 17



Butler Set Play vs. Man

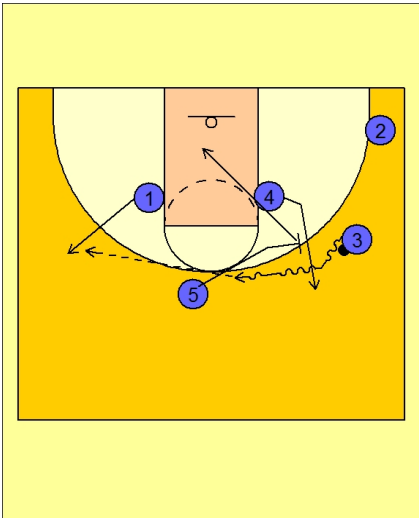
Box set to begin.

#2 clears out to the right corner.

#4 down screens for #3 to receive the entry pass from #1.

After passing, #5 sets a back screen for #1.

#3 looks to pass over the top to the cutting #1.



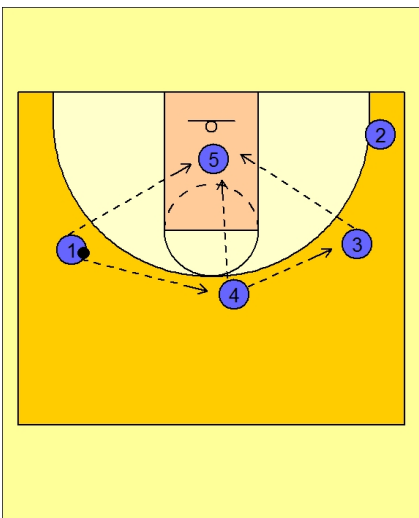
Butler Set Play vs. Man

If the pass to #1 is not available, #5 sets a ball screen for #3.

#3 drives the ball over the top of the screen.

#5 rolls to the rim while #4 clears out on top opposite the ball.

If #5 is not open on the initial roll, #3 will pass to #1 on the left wing area.



Butler Set Play vs. Man

They now have a 4 out 1 alignment and will work to get the ball inside to #5.