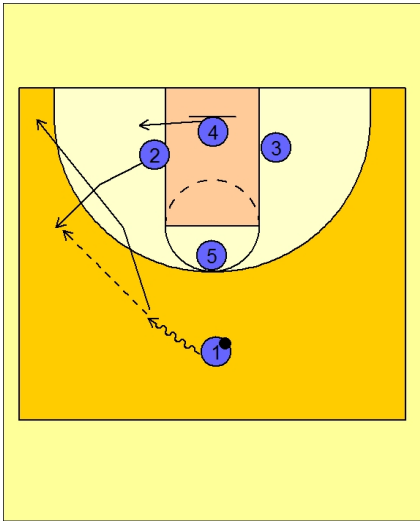




Set play vs. man 2

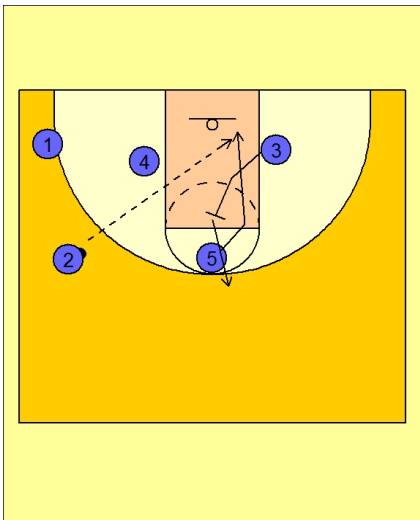


Butler Set Play vs. Man Defense

#1 drives the ball to the left side of the floor. #2 breaks out to receive the entry pass.

#1 passes to #2 and cuts to the ball side corner.

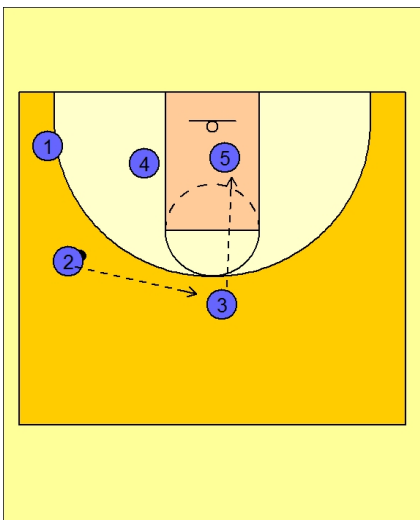
#4 cuts to the ball side low block.



Butler Set Play vs. Man Defense

As #1 is cutting to the corner, #3 is back screening for #5.

#2 looks to throw the lob to #5.



Butler Set Play vs. Man Defense

If #5 is not open, #3 steps out after screening.

#2 passes to #3 on top who looks to score or pass inside to #5 sealing in the paint.