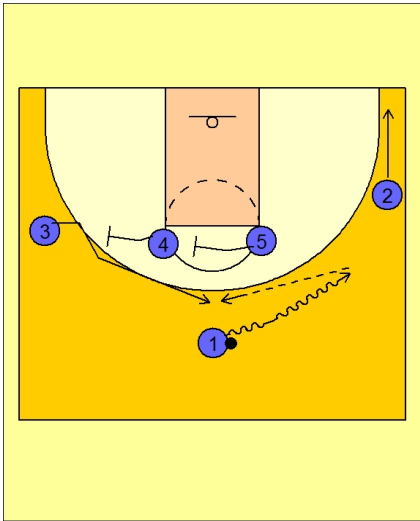




Set play vs. man 20



Butler Set Play vs. Man

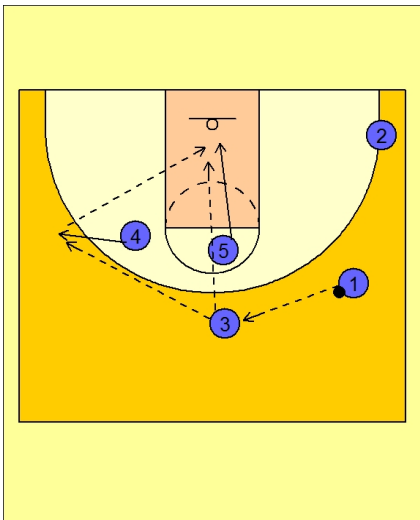
1 - 4 high set to begin.

#1 drives the ball to the right side of the floor.

#2 floats down to the ball side corner area.

#4 and #5 set a double staggered screen for #3 across the top.

#1 passes to #3 on top of the key.



Butler Set Play vs. Man

#5 cuts to the rim after #3 cuts off the screen.

#4 breaks out to the opposite wing.

#3 now looks inside to #5 isolated in the low post. #3 may pass to #4 for the shot or to improve the passing angle into #5.