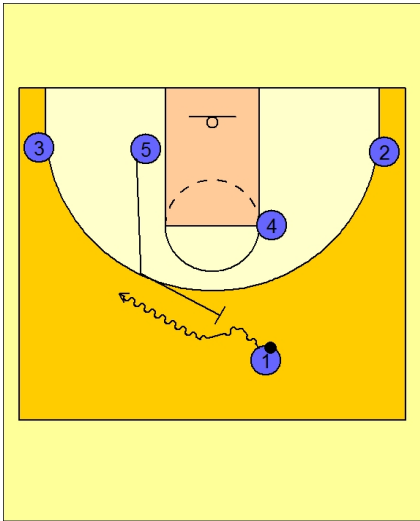


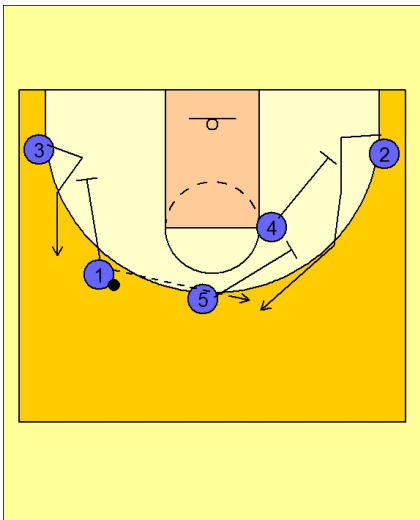


Set play vs. man 21



Butler Set Play vs. Man

- #5 sprints up to set a ball screen for #3.
- #1 looks to attack and score off the ball screen.



Butler Set Play vs. Man

- If #1 cannot score, #4 and #5 set a double staggered screen for #2 in the right corner area.
- #1 passes on top to #2 and then screens down for #3 to keep them in their motion ball screen offense.