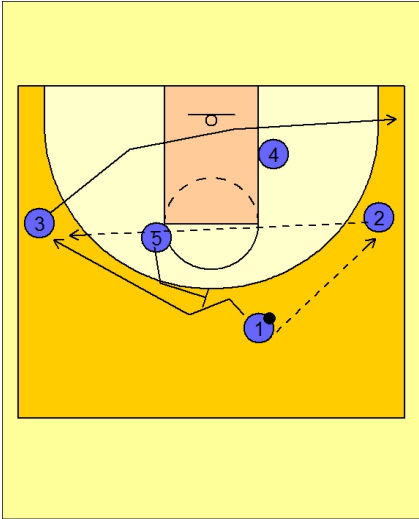




Set play vs. man 22



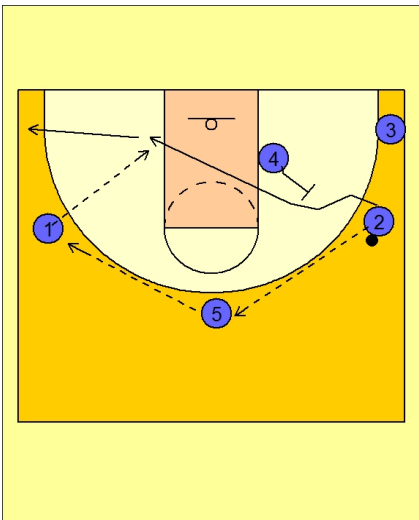
Butler Set Play vs. Man

#1 passes to #2 on the right wing.

#5 back screens for #1 who then cuts over the top of the screen and out to the left wing.

At the same time, #3 is sprinting to the ball side, right side, corner area.

#2 looks to skip the ball to #1 if he is open.

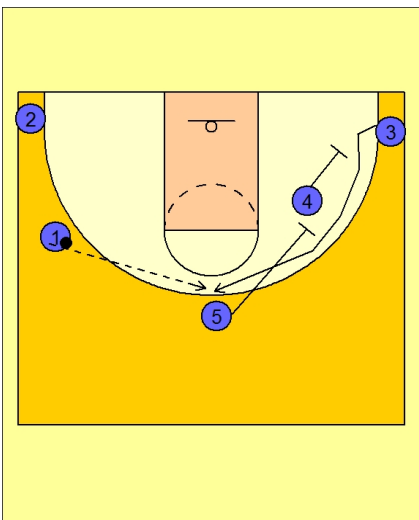


Butler Set Play vs. Man

If #1 is not open, #2 reverses the ball to #5 who then passes to #1.

#4 then steps out and back screens for #2.

#2 cuts through the lane and then out to the ball side corner.



Butler Set Play vs. Man

#4 and #5 then set a double staggered screen away for #3 in the right corner area.