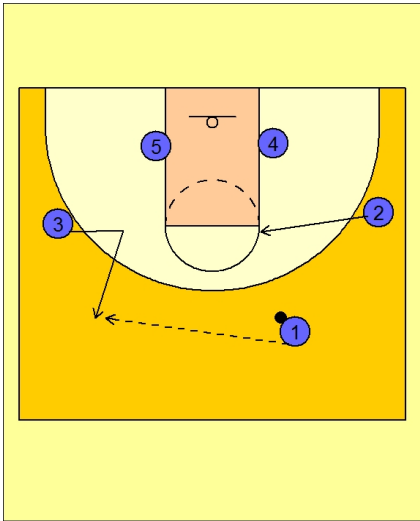




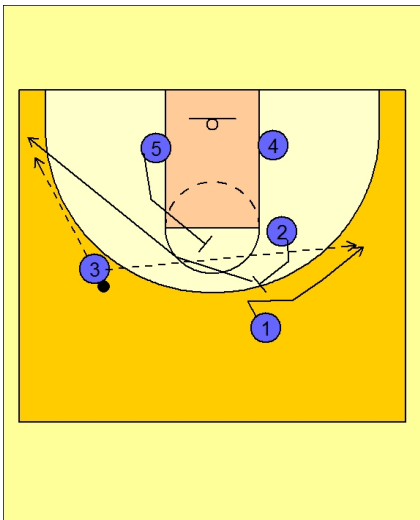
Set play vs. man 23



Butler Set Play vs. Man

#3 cuts in and then breaks out to get open to receive the entry pass from #1.

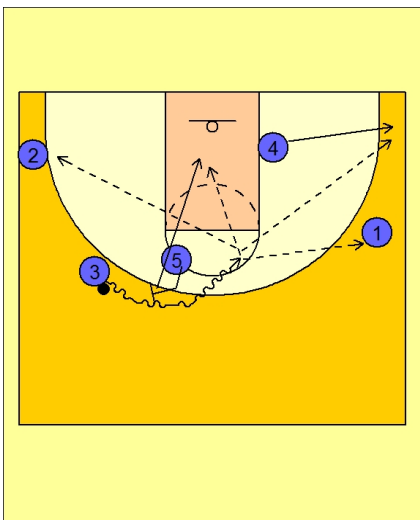
#2 cuts into the right elbow.



Butler Set Play vs. Man

#2 then back screens for #1 who cuts over the top to the right wing area.

#5 then "picks the picker" and screens for #2 who cuts hard to the left corner area for the open shot and pass from #3.



Butler Set Play vs. Man

If #2 is not open, #5 steps over and ball screens for #3 and they look to penetrate and create while #5 rolls inside to isolate in the low post area.