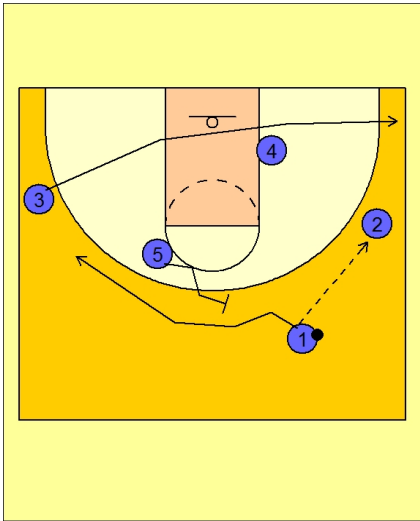


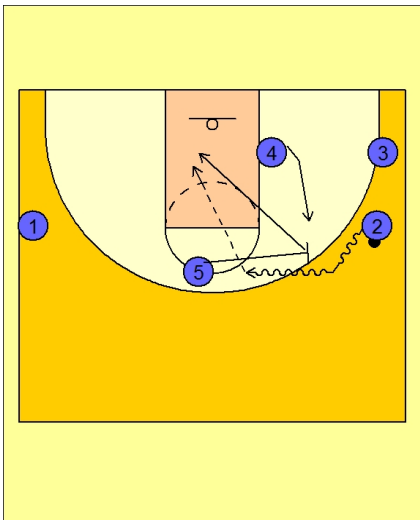


Set play vs. man 25



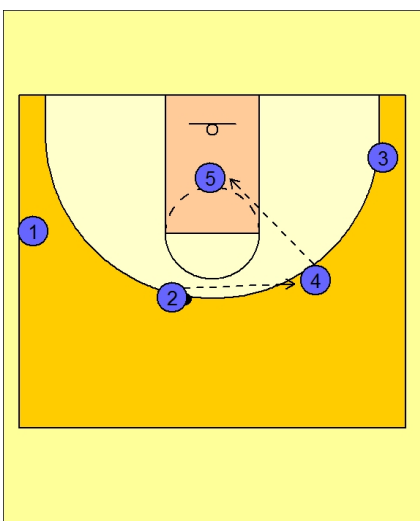
Butler Set Play vs. Man

- #1 passes to #2 on the right wing.
- #3 cuts to the ball side corner.
- #5 back screens for #1.
- #1 cuts over the top and to the left wing area.



Butler Set Play vs. Man

- #5 now ball screens for #2.
- #2 looks to get in the lane and score while #5 rolls to the basket.
- #4, again, takes his defender away from the basket, allowing #5 to isolate in the low post.



Butler Set Play vs. Man

- As in previous plays and diagrams, #2 will look to pass back to #4 for the shot or for a better passing angle inside to #5.