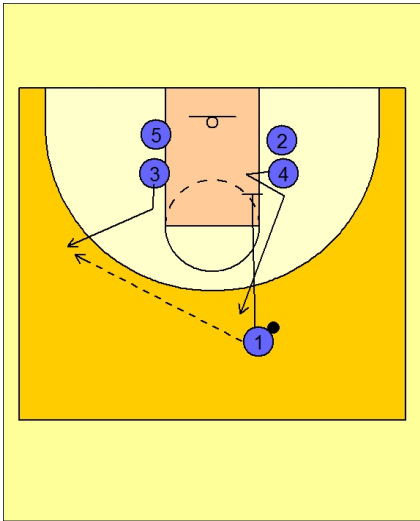




## Set play vs. man 27

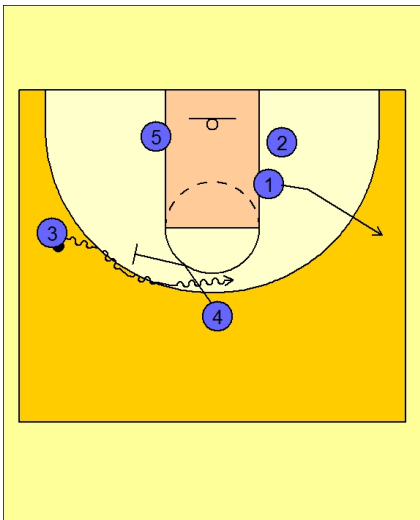


### Butler Set Play vs. Man

Stack set to begin.

#3 breaks up and out to receive the entry pass on the left wing. #1 passes to #3 and then sets a down screen for #4.

#4 breaks up on the top right side.

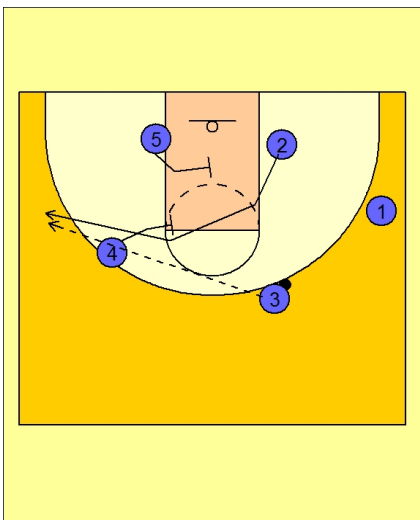


### Butler Set Play vs. Man

#1 screens down and then breaks out to the right wing.

#4 moves over to set a ball screen for #3.

#3 looks to attack and score off the ball screen.



### Butler Set Play vs. Man

If #3 does not have a shot, #5 and #4 set a double staggered screen for #2.

#2 uses this effective misdirection action to get open on the opposite side of the floor.

#3 looks to pass over the top if #2 is open for the jumper.