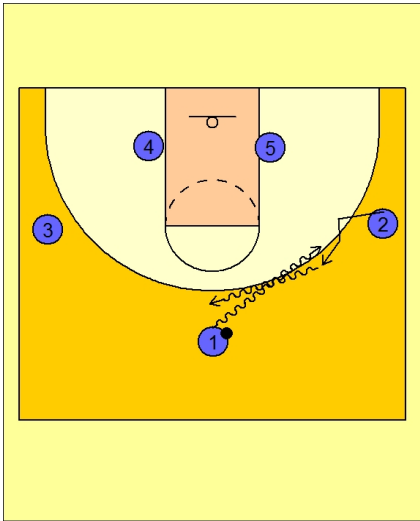




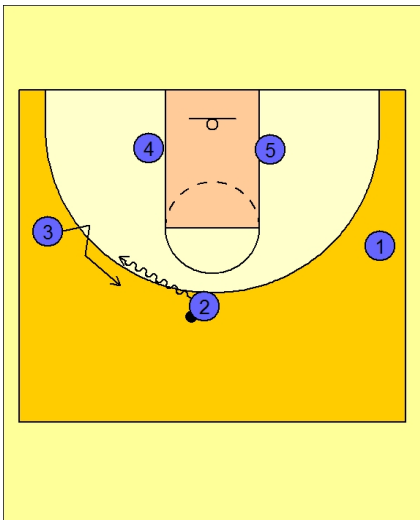
Set play vs. man 28



Butler Set Play vs. Man

#1 executes a dribble hand-off with #2 on the right wing.

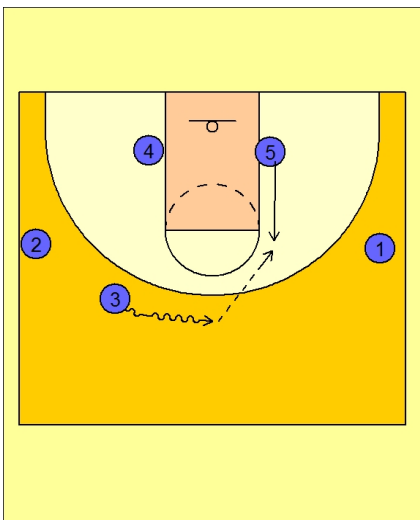
#2 takes the ball and drives the ball across the top.



Butler Set Play vs. Man

#2 now continues the dribble weave and executes a dribble hand-off with #3 on the left wing.

#3 takes the ball and drives the ball on top.



Butler Set Play vs. Man

As #3 drives the ball on top, #5 flashes to the right elbow area to receive the entry pass from #3.



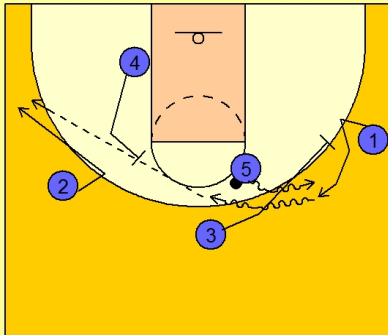
Butler Set Play vs. Man

As soon as #3 passes to #5, #3 cuts hard at #1 on the right wing and screens for him.

#1 comes off the screen from #3 and takes a dribble hand-off from #5.

As this action is happening and #1 comes off the dribble hand-off with #5, #4 is setting a back screen for #2.

#1 has the option to score or skip over the top to #2.



Butler Set Play vs. Man

If #2 is not open, #4 sets a ball screen for #1.

#5, after handing off to #1, rolls in the paint and looks for the ball.

