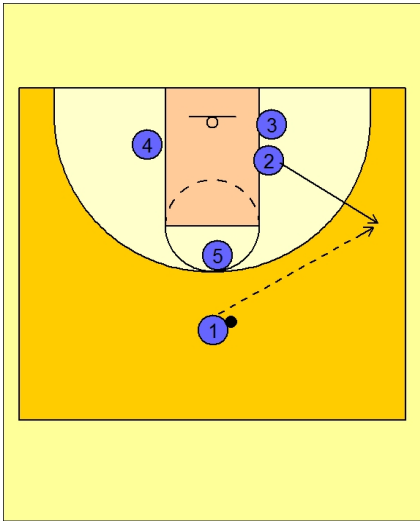


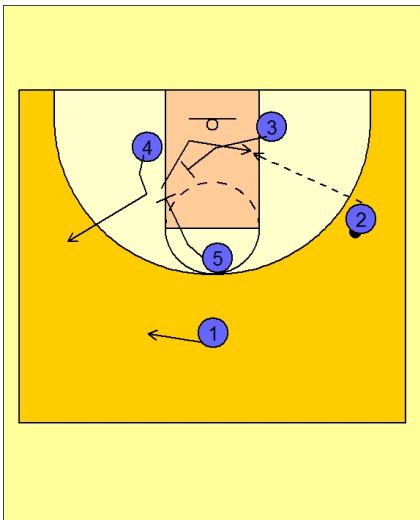


Set play vs. man 3



Butler Set Play vs. Man Defense

#2 breaks out to the right wing to receive the entry pass from #1.



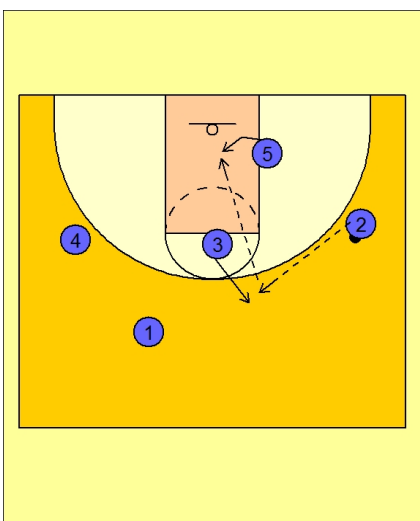
Butler Set Play vs. Man Defense

#5 now moves to screen away for #4.

#4 fakes using the screen and breaks out to the opposite wing area.

#3 has now moved across to "pick the picker" and sets a back screen for #5.

#2 looks to feed the ball inside to #5.



Butler Set Play vs. Man Defense

#3 now pops out after screening and looks to catch the next pass from #2.

#3 will look to score or dump the ball inside to #5 sealing in the paint.